

LOC/DME I-UYO <b>110.9</b> Chan <b>46</b>	APP CRS <b>087°</b>	Rwy Idg <b>10000</b> TDZE <b>90</b> Apt Elev <b>96</b>
---	------------------------	--

ILS RWY 9 (SA CAT I & II)  
GEORGE BUSH INTCNL/HOUSTON (IAH)

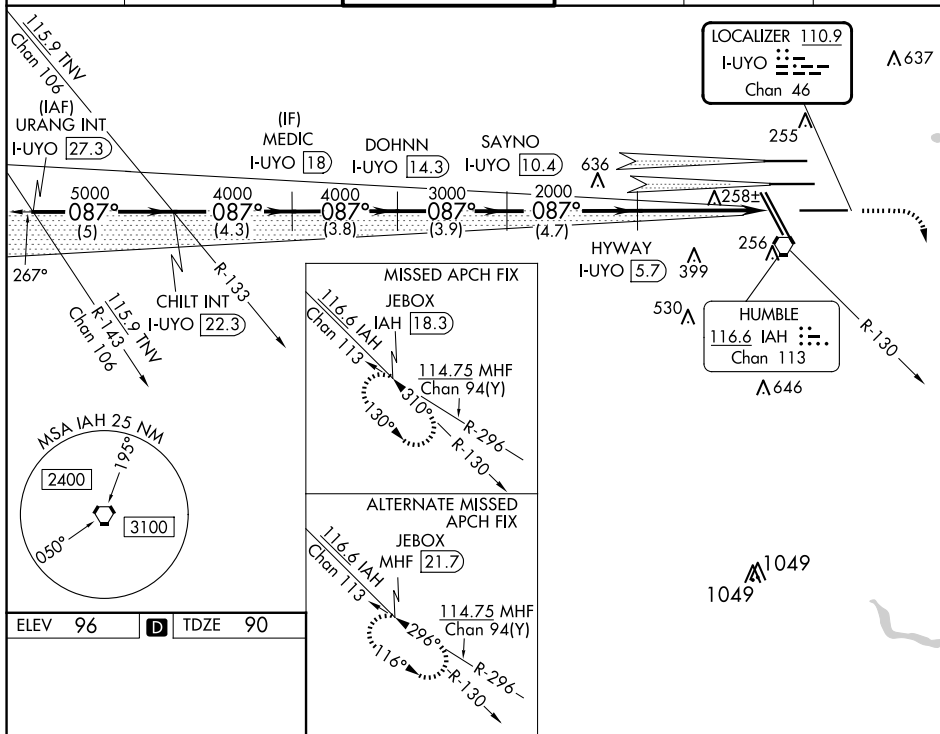
DME required. RADAR required for procedure entry.

▼ Simultaneous approach authorized with Rwy 8L/R. SA CAT I: Requires specific OPSPEC, MSPEC, or LOA approval and use of AUTOLAND or HUD to touchdown. SA CAT II: Reduced lighting: requires specific OPSPEC, MSPEC, or LOA approval and use of AUTOLAND or HUD to touchdown.

MALSR

**MISSED APPROACH:** Climb to 580 then climbing right turn to 3000 on IAH VORTAC R-130 to JEBX/IAH 18.3 DME and hold.

D-ATIS <b>124.05</b>	HOUSTON APP CON <b>120.05 379.1</b> EAST <b>124.35 316.15</b> WEST	HOUSTON TOWER <b>135.15 290.2</b>	GND CON <b>118.575</b>	CLNC DEL <b>128.1</b>	CPDLC
-------------------------	--	--------------------------------------	---------------------------	--------------------------	-------



URANG INT CHILT INT  
I-UYO 27.3 I-UYO 22.3

5000 5000 087° 4000 4000 3000 2000 2000

MEDIC I-UYO 18 DOHNN I-UYO 14.3 SAYNO I-UYO 10.4 HYWAY I-UYO 5.7

GS 3.00° VGS1 and ILS glidepath not coincident TCH 50 (VGS1 Angle 3.00/TCH 71.)

5 NM 4.3 NM 3.8 NM 3.9 NM 4.7 NM 5.8 NM 10.65 NM

CATEGORY	A	B	C	D
S-ILS 9	SA CAT I RA 148/14	150	DA 240	
S-ILS 9	SA CAT II RA 98/12	100	DA 190	

**SA CATEGORY I and II ILS SPECIAL AIRCREW & AIRCRAFT CERTIFICATION REQUIRED**

TDZ/CL Rwy's 8R, 8L, 15R, 26R, 26L, 27R and 33L  
HIRL all Rwy's