

LOC/DME I-GHI 110.9 Chan 46	APP CRS 267°	Rwy Idg 10000 TDZE 86 Apt Elev 96
---	------------------------	--

ILS RWY 27 (CAT II & III)
GEORGE BUSH INTCNL/HOUSTON (IAH)

RNAV 1-GPS or RADAR required for procedure entry. DME required.

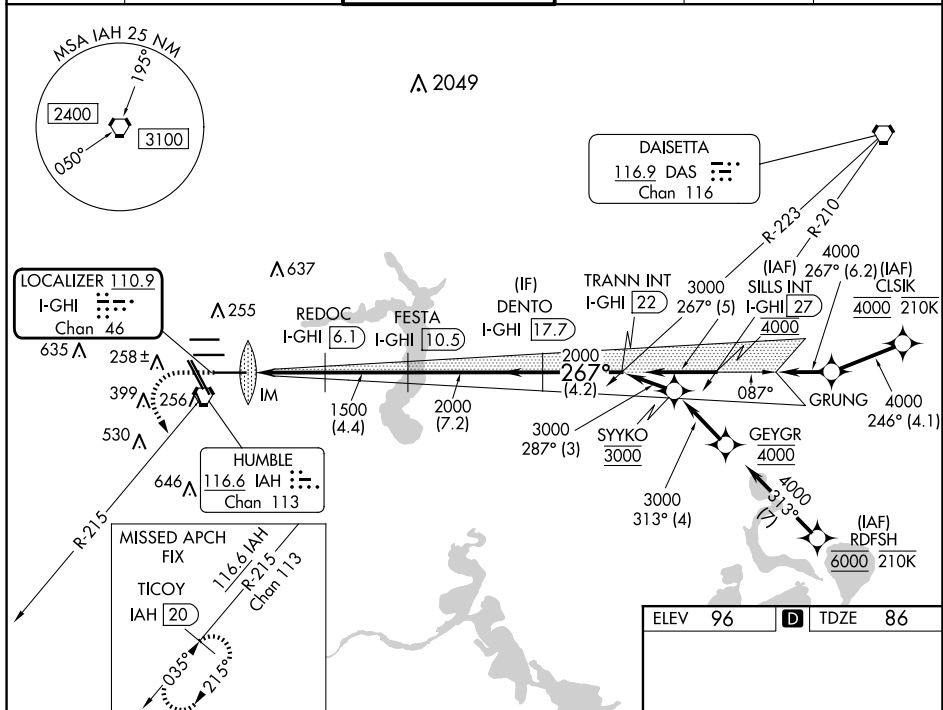
T Simultaneous approach authorized. Use of FD or AP required during simultaneous operations. Cat II: RVR 1000 authorized with specific OPSPEC, MSPEC, or LOA approval and use of autoland or HUD to touchdown.

ALSF-2



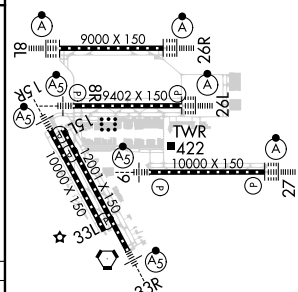
MISSED APPROACH: Climb to 560 then climbing left turn to 3000 on IAH VORTAC R-215 to TICOY/IAH 20 DME and hold.

D-ATIS 124.05	HOUSTON APP CON 120.05 379.1 EAST 124.35 316.15 WEST	HOUSTON TOWER 135.15 290.2	GND CON 118.575	CLNC DEL 128.1	CPDLC
-------------------------	--	--------------------------------------	---------------------------	--------------------------	-------



560
↑
IAH R-215
TICOY IAH 20
VGSi and ILS glidepath not coincident
(VGSi Angle 3.00/TCH 70).
TRANN INT
I-GHI 22
REDOC
I-GHI 6.1
FESTA
I-GHI 10.5
DENTO
I-GHI 17.7
IM
1500
1500
2000
2000
267°
3000
GS 3.00°
TCH 55
1035°
4.3 NM
4.4 NM
7.2 NM
4.2 NM
CATEGORY
S-ILS 27
S-ILS 27
CAT II RA 101/12 100 DA 186
CAT III RVR 06

ELEV	96	D	TDZE	86
------	----	----------	------	----



TDZ/CL Rwy's 8R, 8L, 15R, 26R, 26L,
27 and 33L
HURL all Rwy's

HOUSTON, TEXAS

Amdt 11D 12AUG21

GEORGE BUSH INTCNL/HOUSTON (IAH)

29°59'N-95°20'W

ILS RWY 27 (CAT II & III)