

LOC/DME I-OND
111.55
Chan **52** (Y)

APP CRS
267°

Rwy Idg **9000**
TDZE **95**
Apt Elev **96**

ILS RWY 26R(SA CAT I)

GEORGE BUSH INTCNL/HOUSTON (IAH)

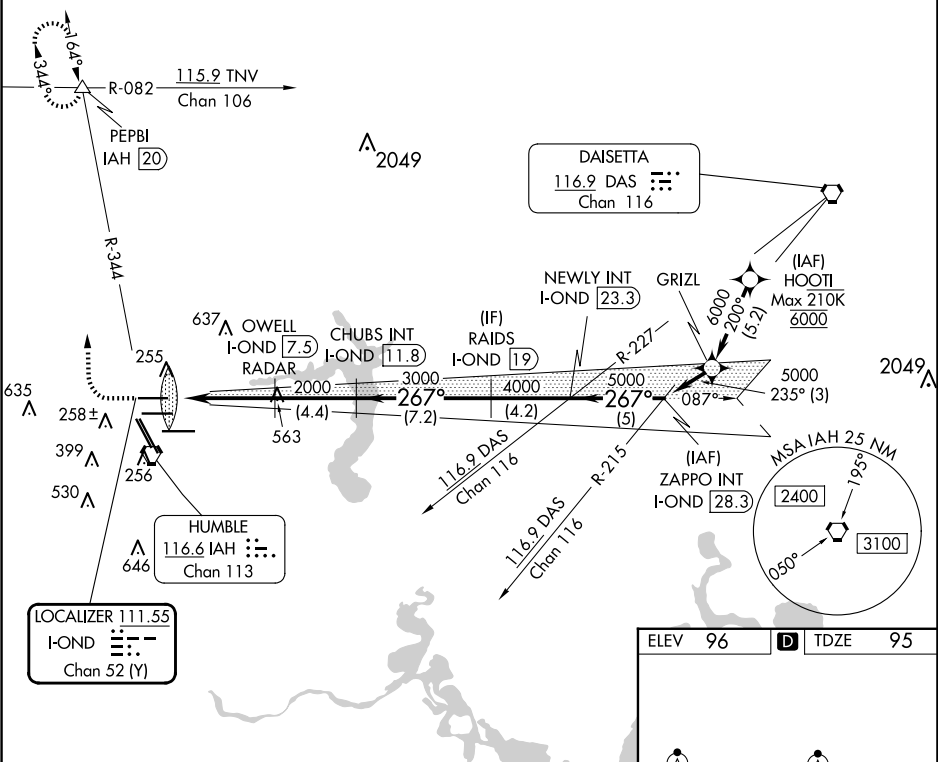
DME required. From HOOI: RNAV 1-GPS required.

Simultaneous approach authorized with Rwy 26L and Rwy 27.
Requires specific OPSPEC, MSPEC or LOA approval and use of HUD to DH.

ALSF-2

MISSED APPROACH: Climb to 600 then climbing right turn to 3000 on IAH VORTAC R-344 to PEPBI INT/ IAH 20 DME and hold.

D-ATIS 124.05	HOUSTON APP CON 120.05 379.1 EAST 124.35 316.15 WEST	HOUSTON TOWER 120.725 290.2	GND CON 118.575	CLNC DEL 128.1	CPDLC
-------------------------	--	---------------------------------------	---------------------------	--------------------------	-------



600 3000 PEPBI
IAH R-344

OWELL I-OND (7.5) RADAR
CHUBS I-OND (11.8)
RAIDS I-OND (19)
NEWLY INT I-OND (23.3)
ZAPPO INT I-OND (28.3)

IM 2000 3000 4000 5000
GS 3.00° TCH 59

CATEGORY	A	B	C	D
S-ILS-26R	RA 157/14 150 DA 245			

SA CATEGORY I ILS - SPECIAL AIRCREW
& AIRCRAFT CERTIFICATION REQUIRED

9000 X 150
9402 X 150
TWR 422
10000 X 150
33L 33R

TDZ/CL Rwy's 8R, 8L, 15R, 26R, 26L, 27 and 33L
HIRL all Rwy's