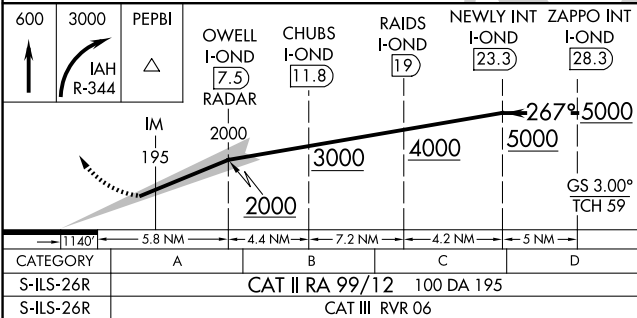
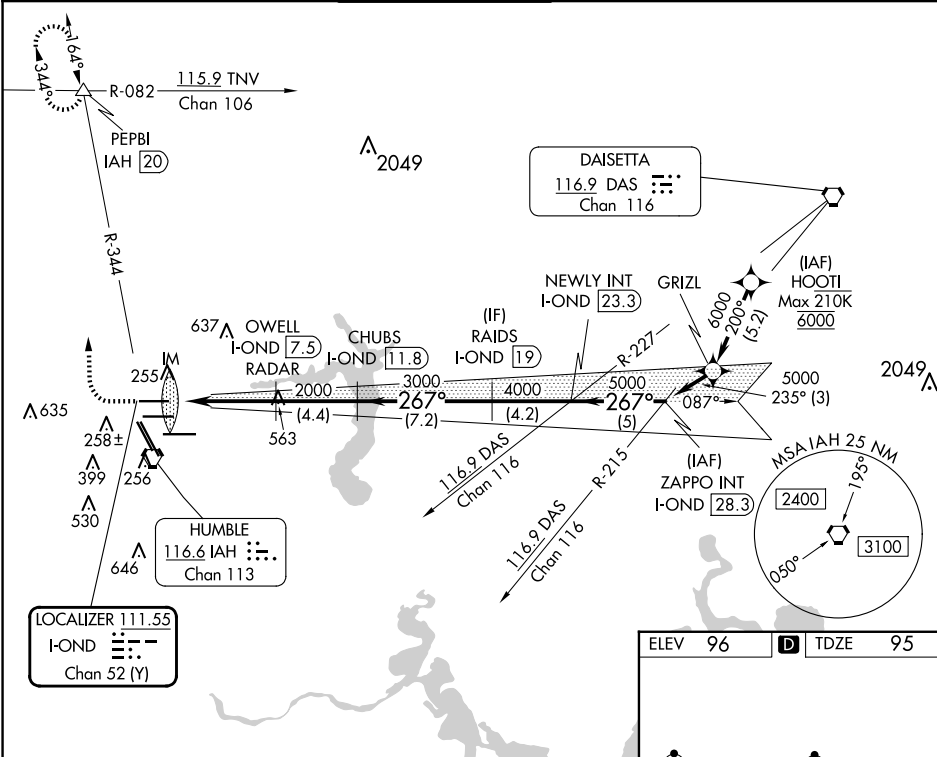


LOC/DME I-OND	APP CRS	Rwy Idg	9000
111.55	267°	TDZE	95
Chan 52 (Y)		Apt Elev	96

ILS RWY 26R (CAT II & III)
GEORGE BUSH INTCNL/HOUSTON (IAH)

DME required. From HOOIT: RNAV 1-GPS required.	ALSF-2	MISSED APPROACH: Climb to 600 then climbing right turn to 3000 on IAH VORTAC R-344 to PEPBI INT/IAH 20 DME and hold.
Simultaneous approach authorized with Rwy 26L and Rwy 27. Cat II: RVR 1000 authorized with specific OPSPEC, MSPEC or LOA approval and use of autoland or HUD to touchdown.		

D-ATIS 124.05	HOUSTON APP CON 120.05 379.1 EAST 124.35 316.15 WEST	HOUSTON TOWER 120.725 290.2	GND CON 118.575	CLNC DEL 128.1	CPDLC
------------------	--	--------------------------------	--------------------	-------------------	-------



CATEGORY II & III ILS - SPECIAL AIRCREW & AIRCRAFT CERTIFICATION REQUIRED

