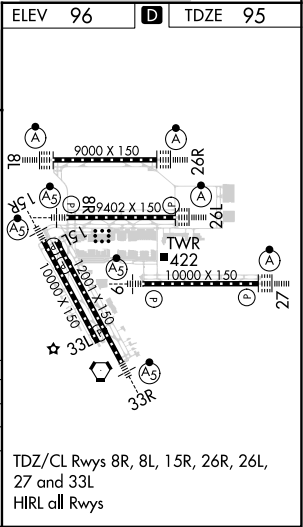
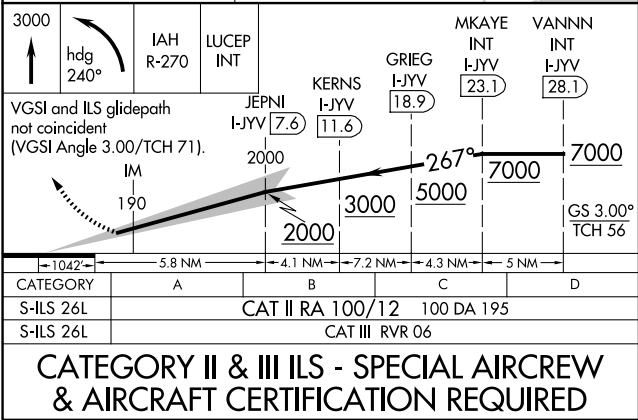
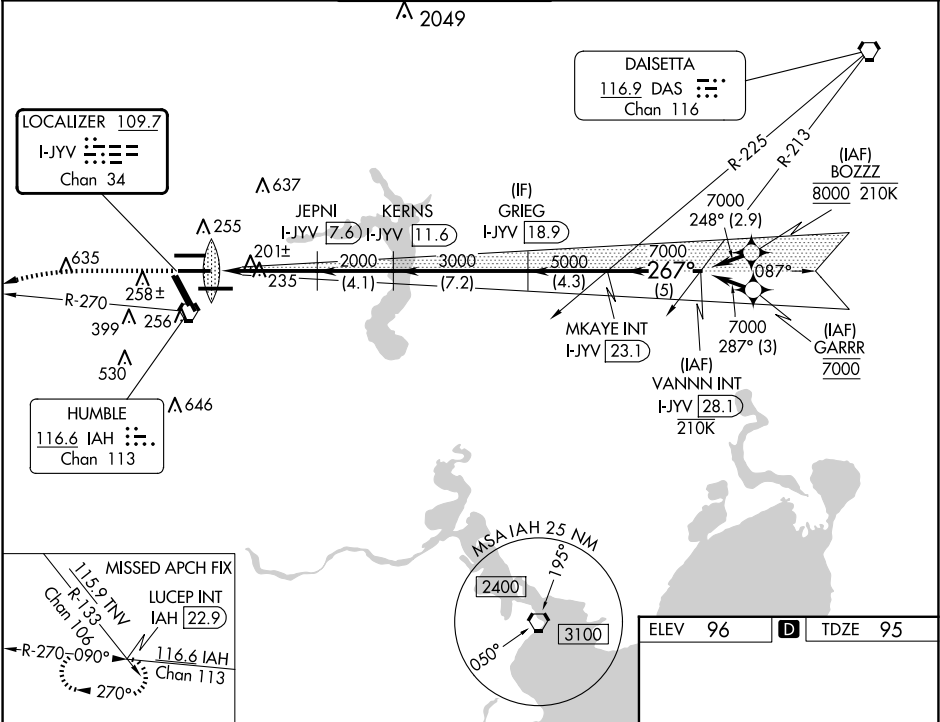


LOC/DME I-JYV	APP CRS	Rwy Idg	9402
109.7	267°	TDZE	95
Chan 34		Apt Elev	96

ILS RWY 26L (CAT II & III)
GEORGE BUSH INTCNL/HOUSTON (IAH)

DME required. From BOZZZ, GARRR: RNAV 1-GPS required.	ALSIF-2	MISSED APPROACH: Climb to 3000 then left turn heading 240° and IAH VORTAC R-270 to LUCEP INT/IAH 22.9 DME and hold.
Simultaneous approach authorized with Rwy 26R and Rwy 27. Cat II: RVR 1000 authorized with specific OPSPEC, MSPEC, or LOA approval and use of autoland or HUD to touchdown.		

D-ATIS	HOUSTON APP CON	HOUSTON TOWER	GND CON	CLNC DEL	CPDLC
124.05	120.05 379.1 EAST 124.35 316.15 WEST	125.35 290.2	118.575	128.1	



SC-5, 07 AUG 2025 to 04 SEP 2025

SC-5, 07 AUG 2025 to 04 SEP 2025