

HOODO SEVEN DEPARTURE (RNAV) AL-5461 (FAA)

HOUSTON, TEXAS

D-ATIS
1124.05
CLINC D
128.1
CPDLC
GND CC
1118.575
121.7 (R
HOUSTO
120.725
125.35
127.3 2
135.15
HOUSTO
127.125

TOP ALTITUDE:
16000

NOTE: RNAV 1.

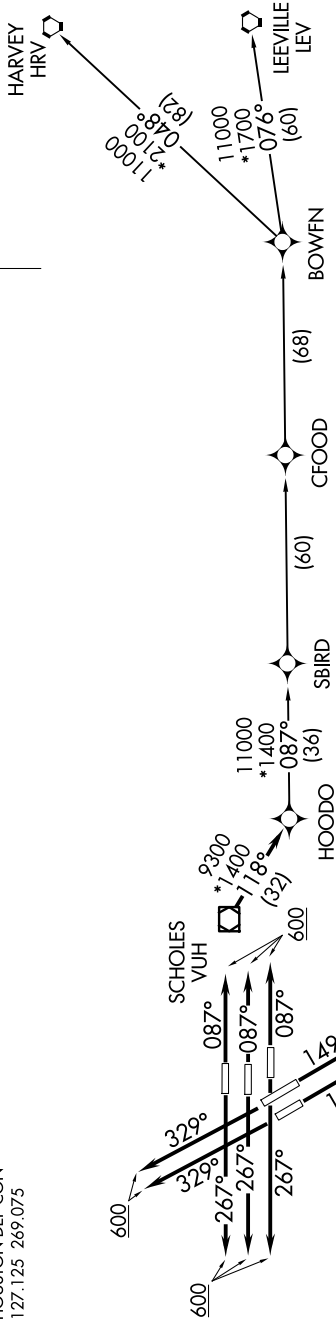
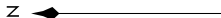
NOTE: RADAR required.

NOTE: ATC assigned only.

NOTE: DME/DME/IRU or GPS required.

NOTE: For non-GPS equipped aircraft, LCH, LLA,

TBD, and LEV DME's must be operational.



TAKEOFF MINIMUMS

Rwys 8L/R, 9, 15L/R, 26L/R, 27, 33L/R:

Standard with minimum climb of 500' per NM to 600.

NOTE: Chart not to scale.

(NARRATIVE ON FOLLOWING PAGE)

SC-5, 07 AUG 2025 to 04 SEP 2025

HOODO SEVEN DEPARTURE (RNAV)

(HOODO7.HOODO) 07OCT21

HOUSTON, TEXAS

GEORGE BUSH INTCNTL/HOUSTON (IAH)