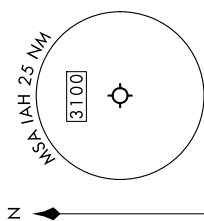


HOUSTON DEP CON
126.675 339.8
D-ATIS
124.05
CLINC DEL
128.1
CPDLC
GND CON
1118.575 (Rwys 8L/R, 2L/R)
121.7 (Rwys 8L/R, 2L/R)
121.7 (Rwys 15L/R, 33R)
HOUSTON TOWER
120.725 290.2 (Rwys
125.35 290.2 (Rwys 8L/R, 2L/R)
127.3 288.25 (Rwys 15L/R, 33R)
135.15 290.2 (Rwys 9L/R, 27R)

TAKEOFF MINIMUMS

Rwys 15L/R, 26L/R, 27, 33L/R: Standard with minimum climb of 500'/NM to 1200.

NOTE: For use during west flow at LAH, for east flow file the PITZZ DEPARTURE.



RNAV 1 - DME/DME/IRU or GPS required.
RADAR required.
RADAR required for non - GPS equipped aircraft.

BNDTO SIX DEPARTURE (RNAV)

(BNDTO6.BNDTO) 11 JUL24

HOUSTON, TEXAS

GEORGE BUSH INTCNTL/HOUSTON (IAH)