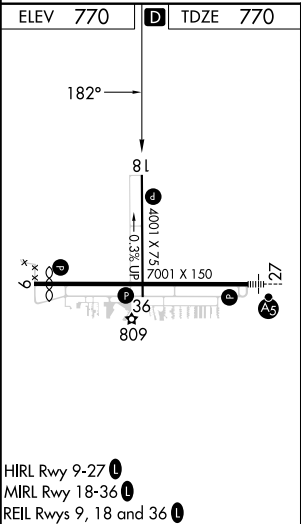
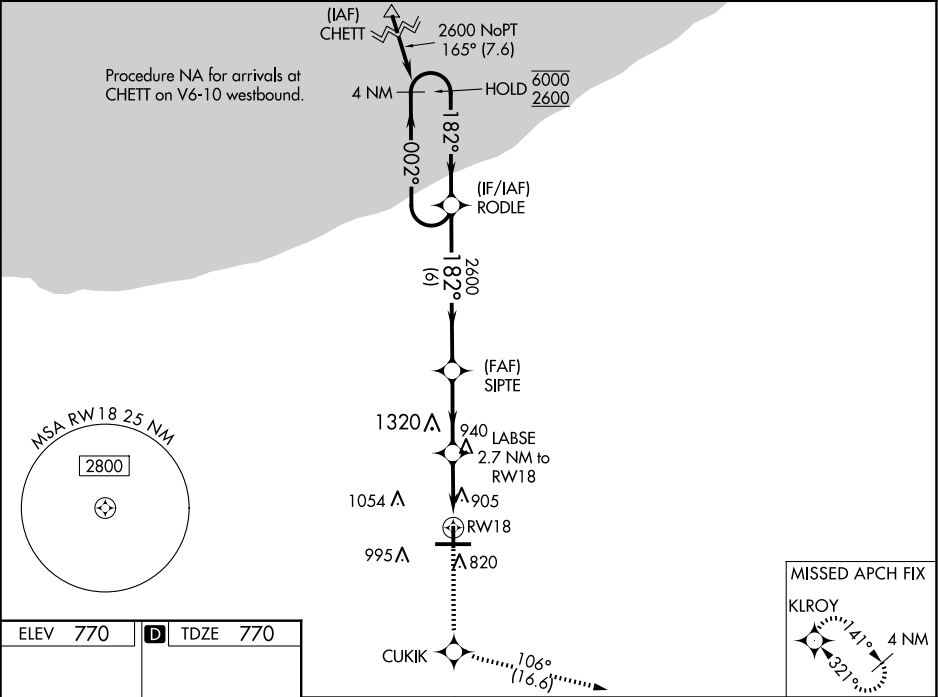


WAAS CH <b>82406</b> <b>W18A</b>	APP CRS <b>182°</b>	Rwy Idg TDZE Apt Elev	<b>4001</b> <b>770</b> <b>770</b>
--	------------------------	-----------------------------	---

RNAV (GPS) RWY 18  
PORTER COUNTY RGNL (VPZ)

RNP APCH-GPS.		MISSED APPROACH: Climb to 2400 direct CUKIK and on track 106° to KIRO and hold.
<div><div>▼</div><div>▲</div></div>	Rwy 18 helicopter visibility reduction below ¾ SM NA. For uncompensated Baro-VNAV systems, LNAV/VNAV NA below -21°C or above 54°C.	

ASOS <b>125.875</b>	SOUTH BEND APP CON ★ <b>132.05 257.8</b>	CLNC DEL <b>120.525</b>	UNICOM <b>122.725 (CTAF) 0</b>
------------------------	---	----------------------------	-----------------------------------



2400 CUKIK		tr 106°		KLROY		VGS1 and RNAV glidepath not coincident (VGS1 Angle 3.00/TCH 24).		4 NM Holding Pattern	
RW18		1.3 NM to RW18		2.7 NM to RW18		LABSE		SIPTÉ 2600	
1.3 NM		1.4 NM		3 NM		6 NM		RODLE	
182°		002°		6000		2600		GP 3.00° TCH 40°	
CATEGORY		A		B		C		D	
LPV DA		1059-7/8		289 (300-7/8)		NA			
LNAV/VNAV DA		1200-1¼		430 (500-1¼)		NA			
LNAV MDA		1200-1		430 (500-1)		NA			
CIRCLING		1260-1 490 (500-1)		1300-1 530 (600-1)		NA			

EC-2, 07 AUG 2025 to 04 SEP 2025

EC-2, 07 AUG 2025 to 04 SEP 2025