

LOC I-VPZ  
**109.7**

APP CRS  
**272°**

Rwy Idg  
TDZE  
Apt Elev  
**6500**  
**770**  
**770**

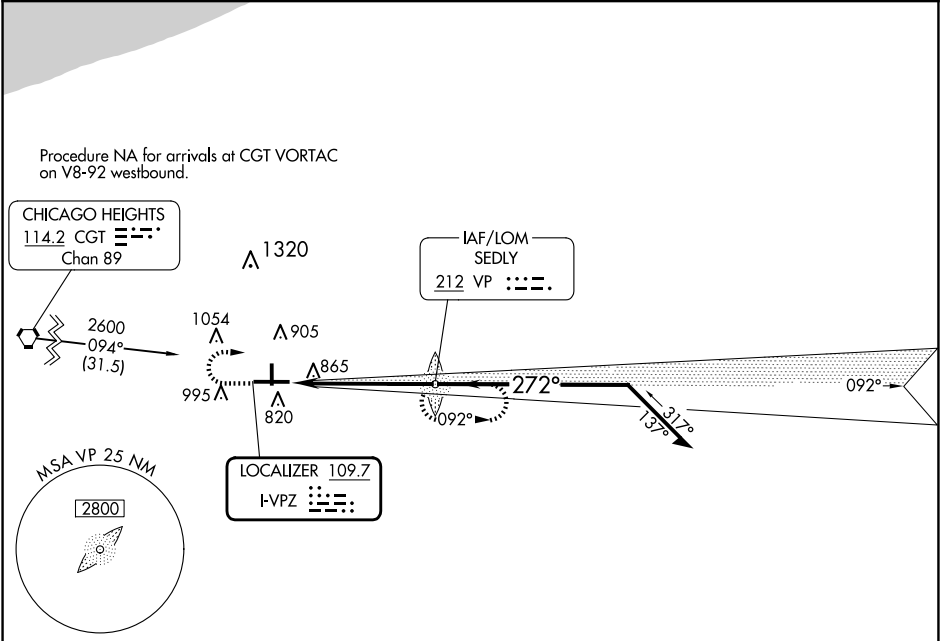
ILS or LOC RWY 27  
PORTER COUNTY RGNL (VPZ)

ADF required.  
▼  
▲ For inop ALS, increase S-LOC 27 Cats C and D visibility to 1 SM.

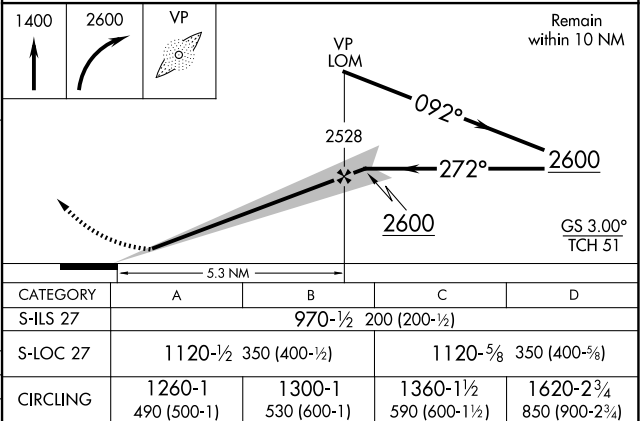
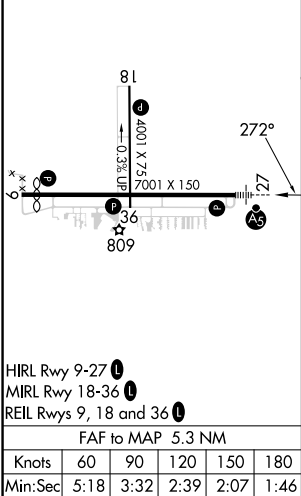
MALSR  
▲

MISSED APPROACH: Climb to 1400, then climbing right turn to 2600 direct SEDLY LOM and hold, continue climb-in-hold to 2600.

ASOS <b>125.875</b>	SOUTH BEND APP CON ★ <b>132.05 257.8</b>	CLNC DEL <b>120.525</b>	UNICOM <b>122.725</b> (CTAF) 0
------------------------	---	----------------------------	-----------------------------------



ELEV 770	D	TDZE 770
----------	---	----------



EC-2, 07 AUG 2025 to 04 SEP 2025

EC-2, 07 AUG 2025 to 04 SEP 2025