

WAAS CH 90409 W12A	APP CRS 120°	Rwy Idg 5000 TDZE 1274 Apt Elev 1274
--	------------------------	---

RNAV (GPS) RWY 12

DENISON MUNI (DNS)

RNP APCH-GPS.

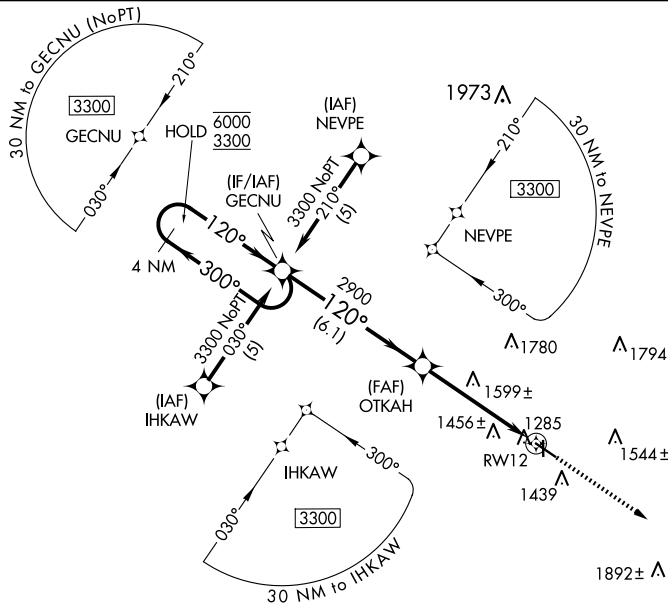
T Circling NA to Rwy 18 and 36. For uncompensated Baro-VNAV systems, LNAV/VNAV NA below -17°C or above 54°C. Baro-VNAV and VDP NA when using Carroll altimeter setting. When local altimeter setting not received, use Carroll altimeter setting; increase LPV DA 1596 feet, LNAV/VNAV DA to 1626 feet; increase all MDAs 80 feet and visibility LNAV Cat C ½ SM and Circling Cat C ¼ SM.

MISSED APPROACH:
Climb to 3900 direct
OTLAZ and hold.

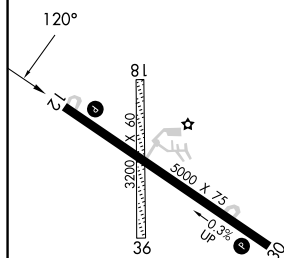
AWOS-3
119.95

MINNEAPOLIS CENTER
119.6 290.4

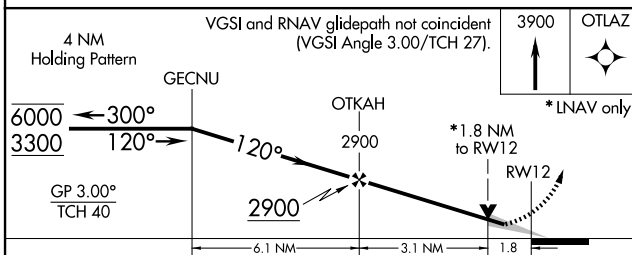
UNICOM
122.8 (CTAF) **L**



ELEV 1274		TDZE 1274
-----------	--	-----------



MIRL Rwy 12-30 **L**
REIL Rwy 12 and 30 **L**



CATEGORY		A	B	C	D
LPV	DA	1524-1 250 (300-1)			NA
LNAV/ VNAV	DA	1554-1 280 (300-1)			NA
LNAV	MDA	1860-1 586 (600-1)		1860-1 $\frac{3}{4}$ 586 (600-1 $\frac{3}{4}$)	NA
CIRCLING		1860-1 586 (600-1)	1880-1 606 (700-1)	2100-2 $\frac{1}{2}$ 826 (900-2 $\frac{1}{2}$)	NA