

WAAS
CH **45603**
W35A

APP CRS
348°

Rwy ldg **6700**
TDZE **152**
Apt Elev **152**

RNAV (GPS) RWY 35L

DAVID WAYNE HOOKS MEML (DWH)

RNP APCH-GPS.

▼

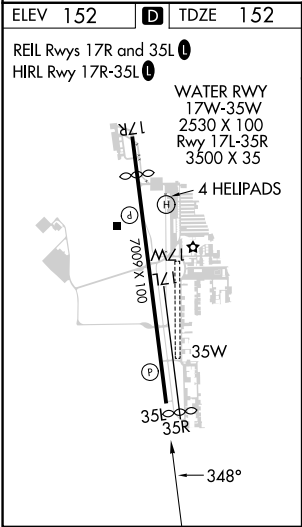
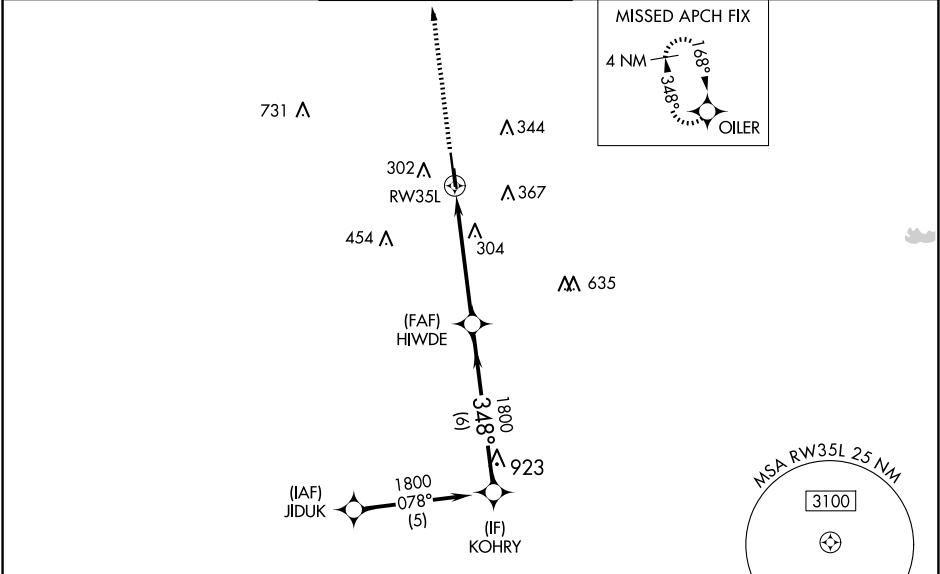
Baro-VNAV and VDP NA when using George Bush Intcntl/Houston altimeter setting.







▲

For uncompensated Baro-VNAV systems, LNAV/VNAV NA below -4°C or above 54°C.
When local altimeter setting not received, use George Bush Intcntl/Houston altimeter setting and increase all DA 36 feet and all MDA 40 feet, increase LPV and LNAV/VNAV visibility all Cats ½ mile, LNAV visibility Cats C/D ¾ mile. Rwy 35L helicopter visibility reduction below ¾ SM NA.
Circling NA to Rwys 17W and 35W. Circling Rwy 35R NA at night.

MISSED APPROACH: Climb to 2000 direct OILER and hold.

ATIS 128.375	HOUSTON APP CON 119.7 281.4	HOOKS TOWER★ 127.4 354.1 (EAST) 118.4 (CTAF) 354.1 (WEST)	GND CON 121.8 239.0	CLNC DEL 119.45	UNICOM 122.95
------------------------	---------------------------------------	---	-------------------------------	---------------------------	-------------------------



2000		OILER		VGSI and RNAV glidepath not coincident (VGSI Angle 3.00/TCH 41).	
					
*LNAV only.		*1.2 NM to RW35L		HIWDE 1800	
					
RW35L				348°	
				1800	
				GP 3.00° TCH 45	
1.2 NM		3.8 NM		6 NM	
CATEGORY	A		B	C	D
LPV DA	451-1		299 (300-1)		
LNAV/ VNAV DA	552-1½		400 (400-1½)		
LNAV MDA	560-1 408 (500-1)		560-1½		408 (500-1½)
 CIRCLING	640-1 488 (500-1)	660-1 508 (600-1)	680-1½ 528 (600-1½)	780-2 628 (700-2)	