

SC-5, 07 AUG 2025 to 04 SEP 2025

TOP ALTITUDE:
ASSIGNED BY ATC

ATIS

128.375

CINC DEL

119.45

GND CON

121.8 239.0

HOOKS TOWER *

127.4 354.1 (EAST)

118.4 (CTAF) 354.1 (WEST)

HOUSTON DEP CON

119.7 281.4 (Rwys 35L/R)

123.8 257.7 (Rwys 17L/R)

NOTE: RNAV 1.

NOTE: RADAR required.

NOTE: ATC assigned only.

NOTE: DME/DME/IRU or GPS required.

NOTE: For non-GPS equipped aircraft, LCH, ILA,

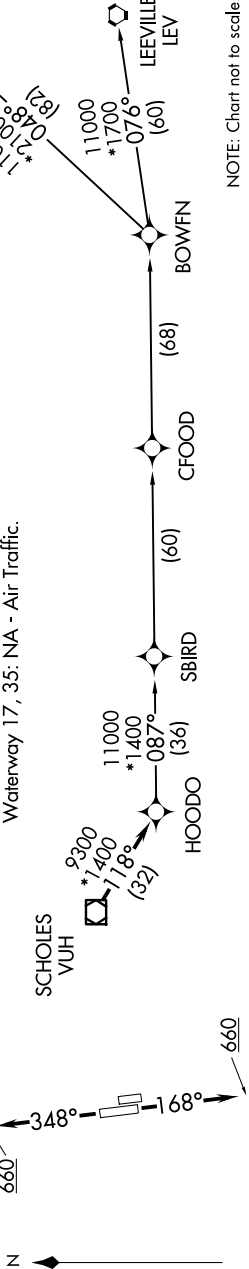
TBD, and LEV DME's must be operational.

TAKEOFF MINIMUMS

Rwys 17L, 35R: NA - Environmental.

Rwys 17R, 35L: Standard with minimum climb of 500' per NM to 600.

Waterway 17, 35: NA - Air Traffic.



NOTE: Chart not to scale.

DEPARTURE ROUTE DESCRIPTION

TAKEOFF RUNWAY 17R: Climb on heading 168° to 660, for RADAR vectors to VUH VOR/DME, thence. . . .

TAKEOFF RUNWAY 35L: Climb on heading 348° to 660, for RADAR vectors to VUH VOR/DME, thence. . . .

. . . on track 118° to HOODO, then on (transition). Maintain ATC assigned altitude.

Expect filed altitude 10 minutes after departure.

BOWFN TRANSITION (HOODO07.BOWFN)

CFOOD TRANSITION (HOODO07.CFOOD)

HARVEY TRANSITION (HOODO07.HRV)

LEEVILLE TRANSITION (HOODO07.LEV)

SBIRD TRANSITION (HOODO07.SBIRD)

SC-5, 07 AUG 2025 to 04 SEP 2025