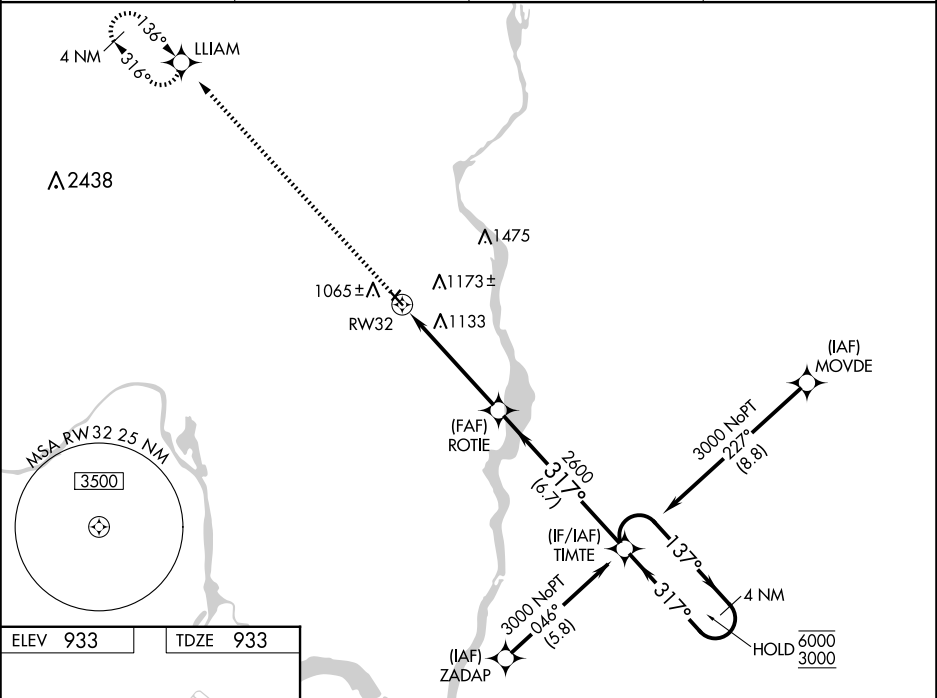


WAAS CH 97445 W32A	APP CRS 317°	Rwy Idg TDZE Apt Elev	3504 933 933
--	------------------------	-----------------------------	---

RNAV (GPS) RWY 32
LAKE ELMO (21D)

RNP APCH - GPS. Rwy 32 helicopter visibility reduction below 3/4 SM NA. For uncompensated Baro-VNAV systems, LNAV/VNAV NA below -16°C or above 54°C. Circling Rwy 4, 22 NA at night.	MISSED APPROACH: Climb to 3000 direct LLIAM and hold.
---	---

AWOS-3 120.075	MINNEAPOLIS APP CON 121.2 335.65	CLNC DEL 118.625	UNICOM 123.075 (CTAF)
--------------------------	--	----------------------------	---------------------------------



3000

↑

LIAM

☀

VGS and RNAV glidepath not coincident
(VGS Angle 3.50/TCH 25).

ROTIE

2600

1.2 NM to RWY 32

↓

1.2 NM

→

3.9 NM

→

6.7 NM

→

4 NM Holding Pattern

137° → 6000

← 317° 3000

GP 3.00°

TCH 40

CATEGORY	A	B	C	D
LPV DA	1209-1	276 (300-1)	NA	
LNAV/VNAV DA	1404-1 ³ / ₈	471 (500-1 ³ / ₈)	NA	
LNAV MDA	1400-1	467 (500-1)	NA	
CIRCLING	1440-1 507 (600-1)	1500-1 567 (600-1)	NA	

MIRL Rwy 14-32
REIL Rws 14 and 32