

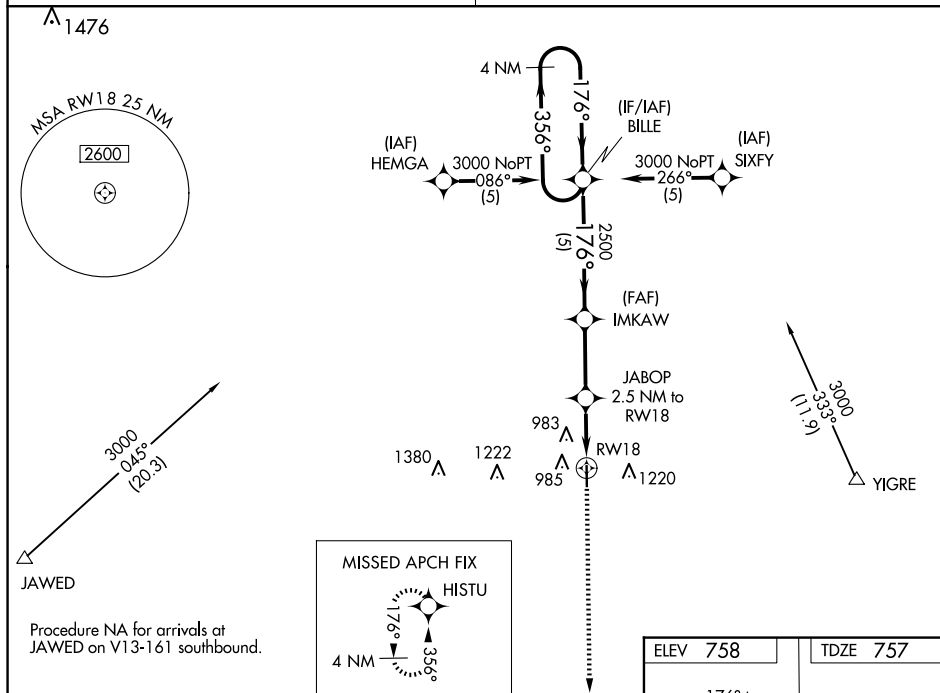
WAAS CH 99626 W18A	APP CRS 176°	Rwy Idg 3907 TDZE 757 Apt Elev 758
--	------------------------	---

RNAV (GPS) RWY 18
TRENTON MUNI (TRX)

MISSED APPROACH: Climb to 3000 direct HISTU and hold.

T Baro-VNAV NA. Use Chillicothe altimeter setting; when not received, use Kirksville altimeter setting and increase LPV DA to 1191 feet and all visibilities $\frac{3}{4}$ SM, LNAV/VNAV DA to 1341 feet and all visibilities $\frac{1}{4}$ SM; increase all MDAs 100 feet and Circling Cat B visibility $\frac{1}{4}$ SM. DME/DME RNP-0.3 NA. Helicopter visibility reduction below $\frac{1}{4}$ SM NA.

KANSAS CITY CENTER	UNICOM
125.25 235.975	122.8 (CTAF) 0

[illegible]