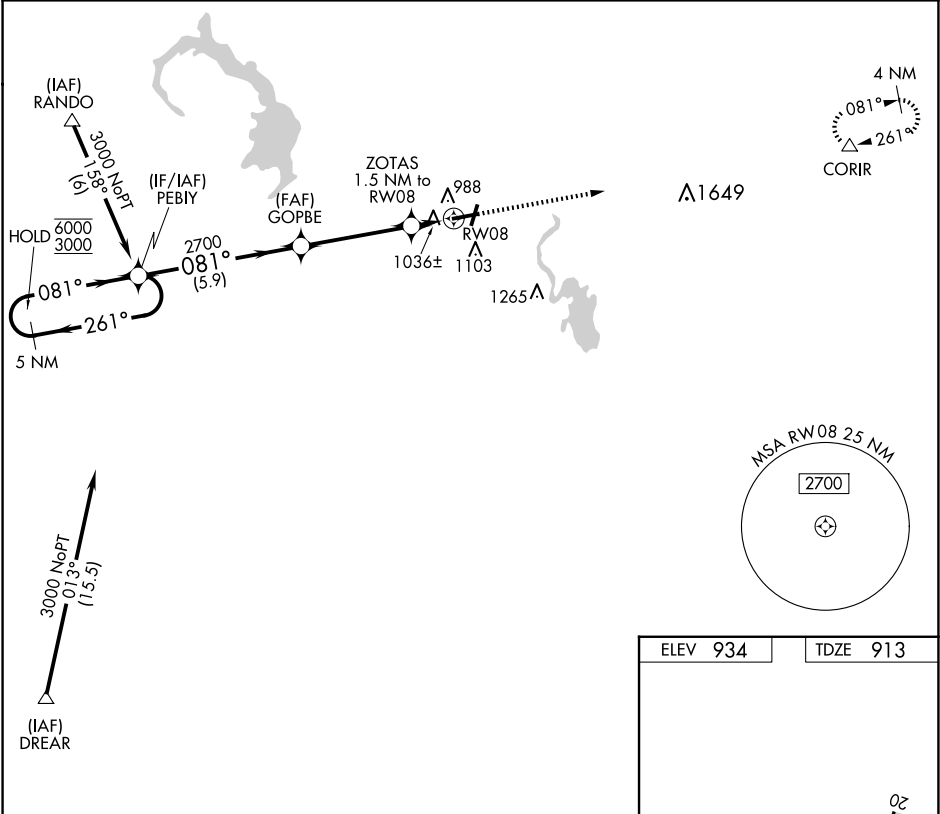


APP CRS	Rwy Ldg	5070
081°	TDZE	913
	Apt Elev	934

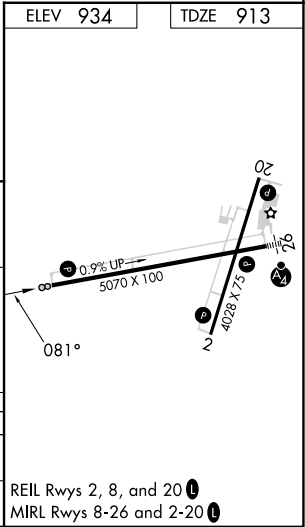
RNAV (GPS) RWY 8
DODGE COUNTY(UNU)

RNP APCH - GPS.	MISSED APPROACH: Climb to 3000 direct CORIR and hold.
<div><div></div><div></div></div> Rwy 8 helicopter visibility reduction below ¾ SM NA.	

AWOS-3 120.825	MADISON APP CON ★ 119.15 343.7	UNICOM 122.7 (CTAF) 0
-------------------	-----------------------------------	--------------------------



5 NM Holding Pattern PEBIY					VGSJ and descent angles not coincident (VGSJ Angle 3.00/TCH 26).		3000	CORIR
6000 ← 261°					081° →			
3000					081°			
					081°			
					2700			
					3.00° TCH 40			
					1.5 NM to RW08			
					RW08			
					1420			
					5.9 NM			
					4 NM			
					1.5 NM			
CATEGORY	A	B	C	D				
LNAV MDA	1320-1	407 (400-1)	1320-1½ 407 (400-1½)	NA				
CIRCLING	1420-1	486 (500-1)	1420-1½ 486 (500-1½)	NA				



EC-3, 07 AUG 2025 to 04 SEP 2025

EC-3, 07 AUG 2025 to 04 SEP 2025