

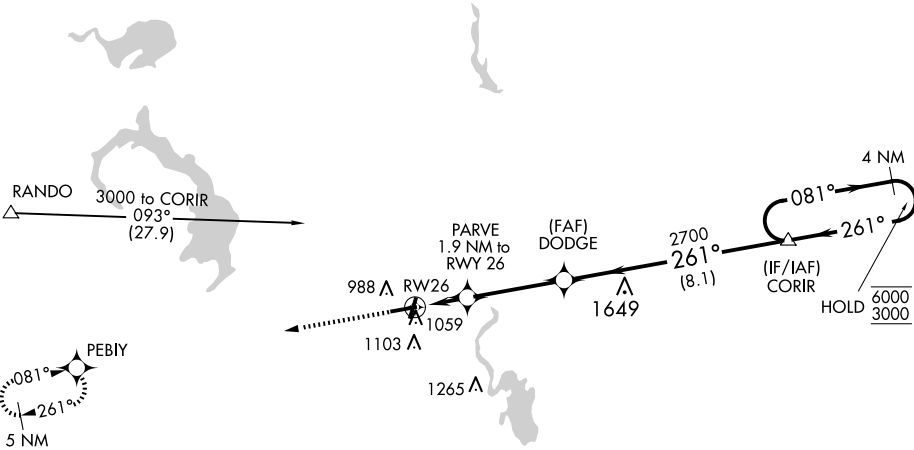
APP CRS	Rwy Ldg	5070
261°	TDZE	934
	Apt Elev	934

RNAV (GPS) RWY 26

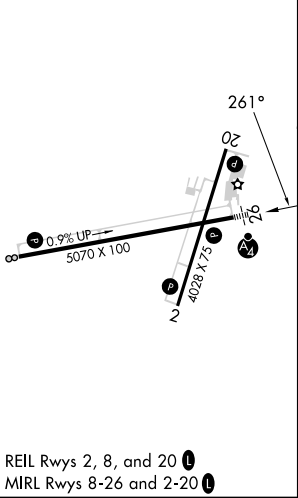
DODGE COUNTY(UNU)

RNP APCH - GPS.		MALSF	MISSED APPROACH: Climb to 3000 direct PEBIY and hold.
<div><div></div><div></div></div>		<div><div></div><div></div></div>	
AWOS-3 120.825	MADISON APP CON ★ 119.15 343.7	UNICOM 122.7 (CTAF) <div></div>	

Procedure NA for arrivals at RANDO on V9-341 southwest bound and V170 northwest bound.



ELEV 934	TDZE 934
----------	----------



3000 PEBIY		VGSI and descent angles not coincident (VGSI Angle 3.00/TCH 35).		4 NM Holding Pattern	
PARVE 1.9 NM to RWY 26		DODGE		CORIR	
1.1 NM to RWY 26		3.00° TCH 40		081° 261° 6000/3000	
1580		2700			
1.1 NM 0.8		3.5 NM		8.1 NM	
CATEGORY	A	B	C	D	
LNAV MDA	1320-¾	386 (400-¾)	1320-⅞ 386 (400-⅞)	NA	
CIRCLING	1420-1	486 (500-1)	1420-1½ 486 (500-1½)	NA	

EC-3, 07 AUG 2025 to 04 SEP 2025

EC-3, 07 AUG 2025 to 04 SEP 2025