

WAAS CH 61307 W20A	APP CRS 198°	Rwy Idg TDZE 934 Apt Elev 934	4028
--	------------------------	---	-------------

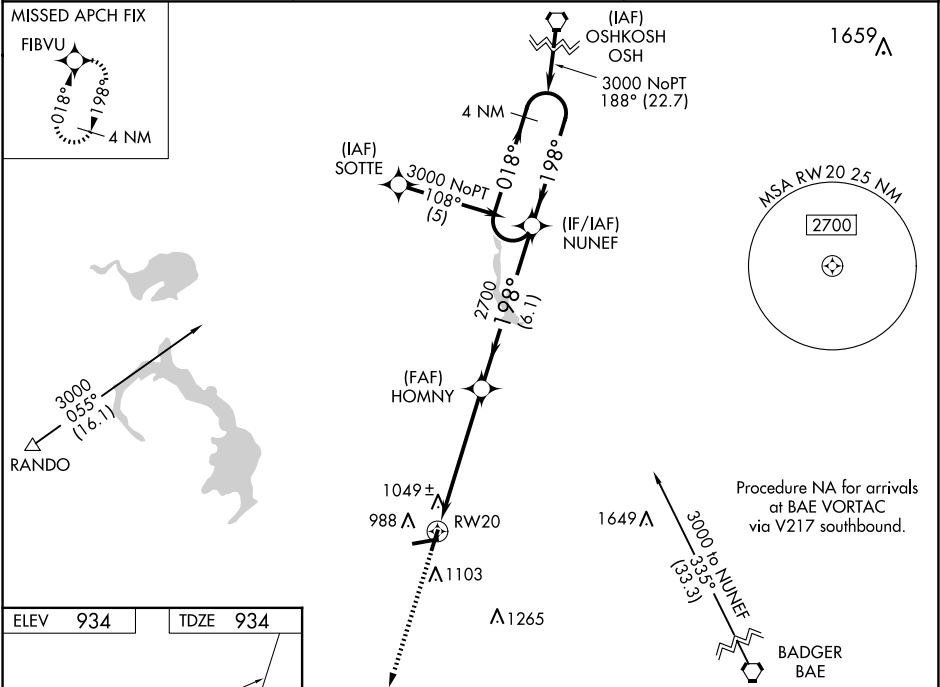
RNAV (GPS) RWY 20

DODGE COUNTY (UNU)

⚠ For uncompensated Baro-VNAV systems, LNAV/VNAV NA below -16° C (4° F) or above 54° C (130° F). DME/DME RNP-0.3 NA. When local altimeter setting not received, use Dane County Rgnl-Truax Fld altimeter setting and increase all DA/MDA 100 feet, increase visibilities ¼ mile. Baro-VNAV NA when using Dane County Rgnl-Truax Fld altimeter setting. Visibility reduction by helicopters NA.

MISSED APPROACH:
Climb to 3000 direct FIBVU and hold.

AWOS-3 120.825	MADISON APP CON ★ 119.15 343.7	UNICOM 122.7 (CTAF) 0
--------------------------	--	---------------------------------



ELEV	934	TDZE	934
------	-----	------	-----

3000	FIBVU	VGSI and descent angles not coincident (VGSI Angle 3.00/TCH 25).	NUNEF	4 NM Holding Pattern
		HOMNY	2700	
5.4 NM		6.1 NM		

CATEGORY	A	B	C	D
LPV DA	1214-1 280 (300-1)			NA
LNAV/VNAV DA	1350-1½ 416 (500-1½)			NA
LNAV MDA	1300-1 366 (400-1)			NA
CIRCLING	1440-1 506 (600-1)		1440-1½ 506 (600-1½)	NA