

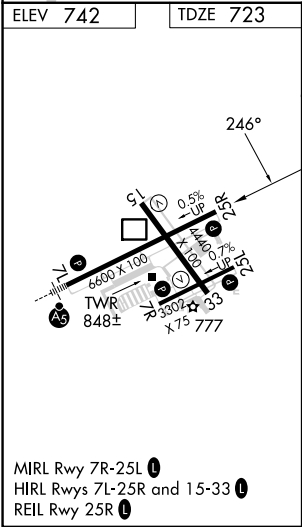
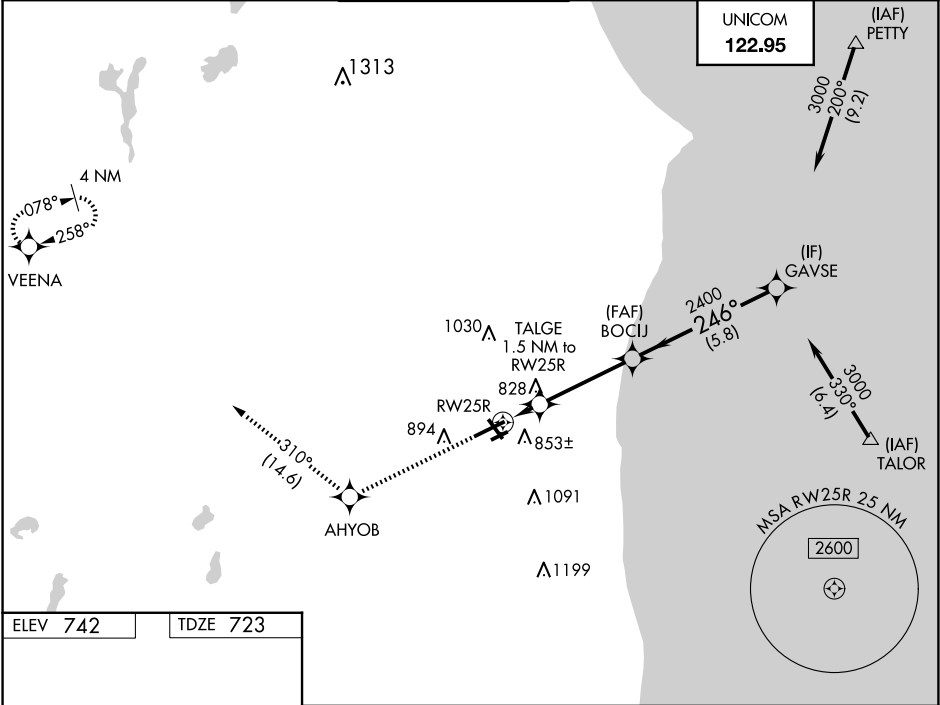
WAAS CH 49014 W25A	APP CRS 246°	Rwy Idg TDZE 723 Apt Elev 742
--	------------------------	---

RNAV (GPS) RWY 25R

KENOSHA RGNL (ENW)

RNP APCH.	MISSED APPROACH: Climb to 3000 direct AHYOB and on track 310° to VEENA and hold.
<div><div></div><div>Circling Rwy 7R, 15 NA at night. For uncompensated Baro-VNAV systems, LNAV/VNAV NA below -23°C or above 54°C.</div></div>	

ATIS 127.175	MILWAUKEE APP CON 135.875 317.725	KENOSHA TOWER ★ 118.6 (CTAF) 0 353.6	GND CON 121.875	CLNC DEL 121.875	CLNC DEL 118.6 (When twr closed)
------------------------	---	--	---------------------------	----------------------------	---



3000	AHYOB	tr 310°	VEENA	GAVSE
*LNAV only	TALGE 1.5 NM to RW25R			
	RW25R	*1220	2400	3000
	1.5 NM	3.7 NM	5.8 NM	
CATEGORY	A	B	C	D
LPV DA		923-¾	200 (200-¾)	
LNAV/VNAV DA		984-⅞	261 (300-⅞)	
LNAV MDA		1080-1	357 (400-1)	
<div></div> CIRCLING	1200-1 458 (500-1)	1340-1 598 (600-1)	1400-1¾ 658 (700-1¾)	1440-2¼ 698 (700-2¼)