

WAAS CH <b>69423</b> <b>W28A</b>	APP CRS <b>284°</b>	Rwy Idg <b>5504</b> TDZE <b>1189</b> Apt Elev <b>1191</b>
--	------------------------	---

RNAV (GPS) RWY 28  
KNOX COUNTY (4I3)

RNP APCH.

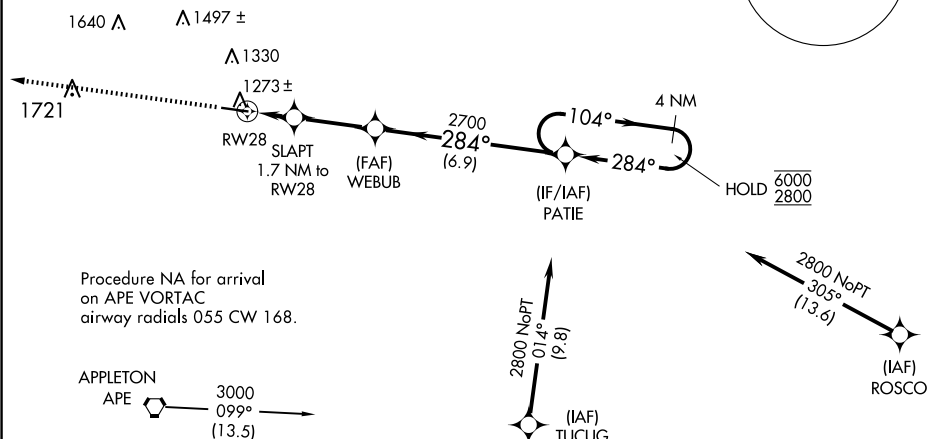
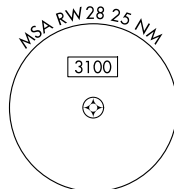
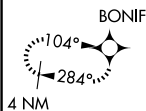


For uncompensated Baro-VNAV systems, LNAV/VNAV NA below -17°C or above 36°C.

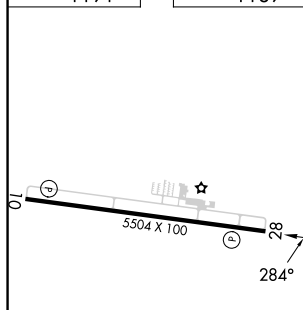
**MISSED APPROACH:** Climb to 3000 direct BONIF and hold.

AWOS-3 <b>126.05</b>	COLUMBUS APP CON <b>125.95 317.775</b>	CLNC DEL <b>119.45</b>	UNICOM <b>123.05 (CTAF) 0</b>
-------------------------	---	---------------------------	----------------------------------

MISSED APCH FIX



ELEV	1191		TDZE	1189
------	------	--	------	------

[illegible]