

WAAS CH 63123 W10A	APP CRS 104°	Rwy ldg TDZE 1191 Apt Elev 1191	5504
--	------------------------	---	-------------

RNAV (GPS) RWY 10

KNOX COUNTY (4I3)

RNP APCH.

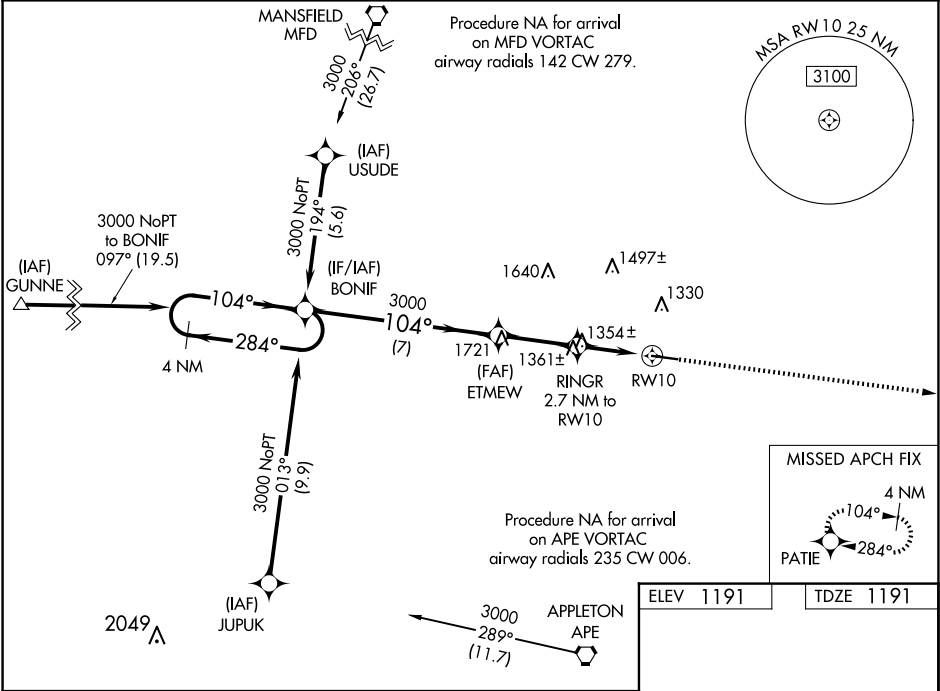
▼

▲

Baro-VNAV and VDP NA when using Newark altimeter setting. For uncompensated Baro-VNAV systems, LNAV/VNAV NA below -17°C (2°F) or above 36°C (96°F). When Local altimeter setting not received, use Newark altimeter setting and increase all DA 86 feet and all MDA 100 feet and increase LPV all Cats, LNAV/VNAV all Cats, LNAV Cat C and D visibility ¼ mile. Rwy 10 helicopter visibility reduction below ¾ SM NA.

MISSED APPROACH: Climb to 2800 direct PATIE and hold.

AWOS-3 126.05	COLUMBUS APP CON 125.95 317.775	CLNC DEL 119.45	UNICOM 123.05 (CTAF) 0
-------------------------	---	---------------------------	----------------------------------



4 NM Holding Pattern		BONIF	ETMEW	RINGR	2.7 NM to RW10	2800	PATIE
3000 ← 284°		104° →	3000	3000	*1.2 NM to RW10		
GP 3.00°							
TCH 40							
		7 NM	2.9 NM	1.5 NM	1.2		
CATEGORY	A	B	C	D			
LPV DA	1520-1½		329 (400-1½)				
LNAV/VNAV DA	1516-1½		325 (400-1½)				
LNAV MDA	1620-1 429 (500-1)		1620-1¼ 429 (500-1¼)				

ELEV 1191 TDZE 1191

MIRL Rwy 10-28 0
REIL Rwy 10 and 28 0