

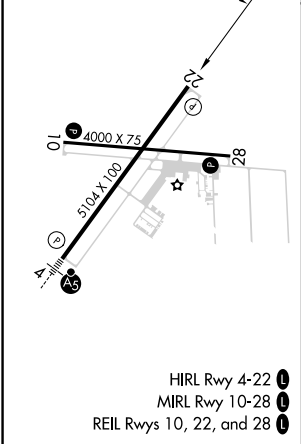
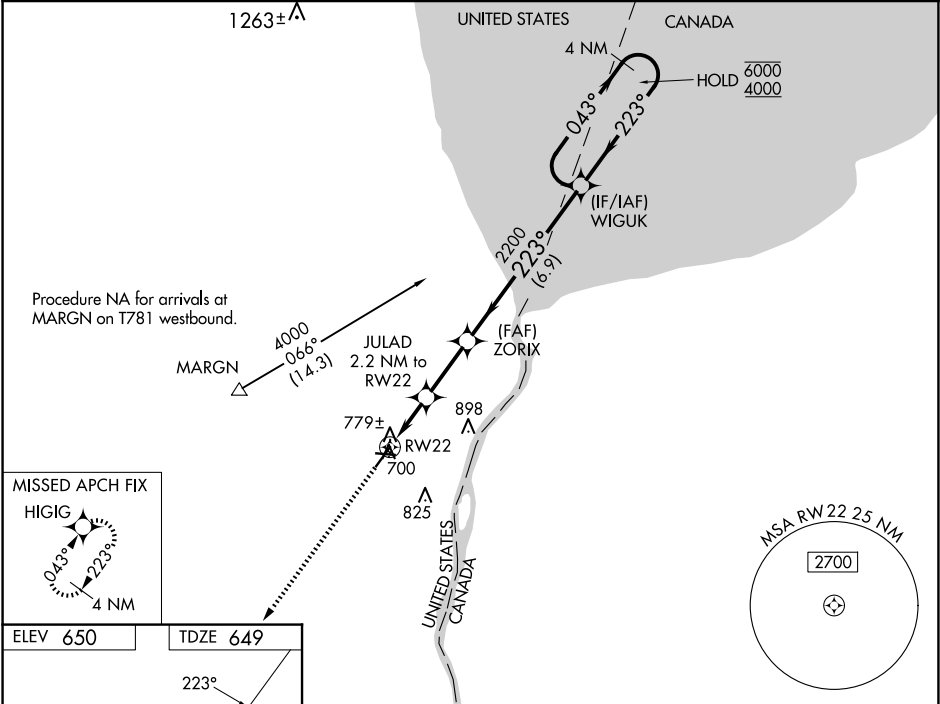
WAAS CH 97723 W22A	APP CRS 223°	Rwy ldg 5104 TDZE 649 Apt Elev 650
--	------------------------	---

RNAV (GPS) RWY 22

ST CLAIR COUNTY INTL (PHN)

RNP APCH.	MISSED APPROACH: Climb to 4000 direct HIGIG and hold, continue climb-in-hold to 4000.
<div><div>T</div><div>A</div></div> Rwy 22 helicopter visibility reduction below 1 SM NA. Straight-in Rwy 22 NA at night, Circling Rwy 10, 22, 28 NA at night.	

AWOS-3 118.375	SELFDRGE APP CON ★ 119.6 391.9	UNICOM 123.05 (CTAF) 1
--------------------------	--	----------------------------------



4000	HIGIG	VGSI and descent angles not coincident (VGSI Angle 3.00/TCH 45).		4 NM Holding Pattern	
CATEGORY		A	B	C	D
LP	MDA	1020-1 371 (400-1)			
LNAV	MDA	1040-1 391 (400-1)		1040-1 $\frac{1}{8}$ 391 (400-1 $\frac{1}{8}$)	
CIRCLING		1160-1 510 (600-1)		1260-1 $\frac{3}{4}$ 610 (700-1 $\frac{3}{4}$)	1260-2 610 (700-2)