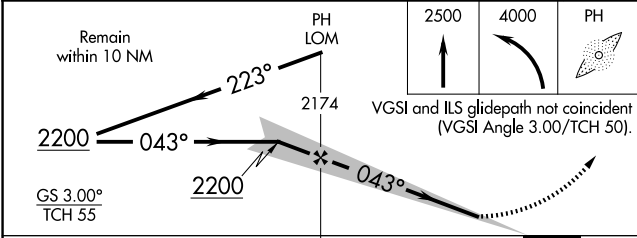
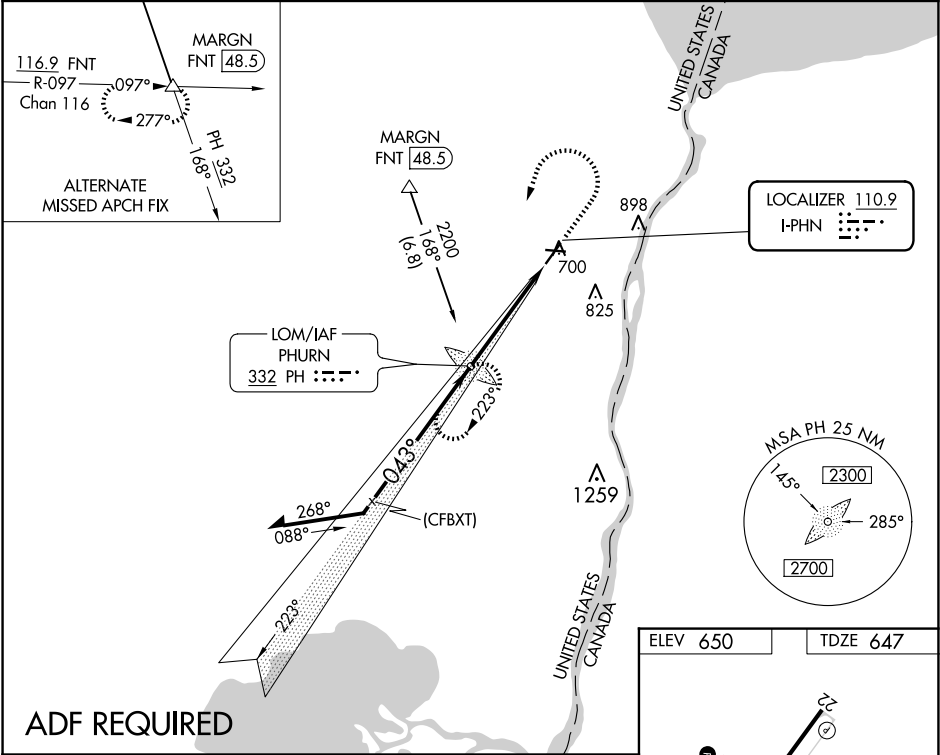


LOC I-PHN <b>110.9</b>	APP CRS <b>043°</b>	Rwy Idg TDZE Apt Elev <b>5104 647 650</b>
---------------------------	------------------------	--

ILS or LOC RWY 4  
ST CLAIR COUNTY INTL (PHN)

<p><b>ADF required.</b> When local altimeter setting not received, use Troy altimeter setting and increase all DA 95 feet and all MDA 100 feet; increase S-LOC 4 Cats C and D and Circling Cats C and D visibility ¼ mile. For inop MALSR when using Troy altimeter setting, increase S-ILS 4 all Cats visibility to ¾ mile. Night landing: Rwy 10, 22, 28 NA.</p>	<p><b>MALSR</b></p>	<p><b>MISSED APPROACH:</b> Climb to 2500 then climbing left turn to 4000 direct PHURN LOM and hold, continue climb-in-hold to 4000.</p>
--	---------------------	---

AWOS-3 <b>118.375</b>	SELFIDGE APP CON ★ <b>119.6 391.9</b>	UNICOM <b>123.05 (CTAF) 0</b>
--------------------------	--	----------------------------------



CATEGORY	A	B	C	D
S-ILS 4	847-½ 200 (200-½)			
S-LOC 4	1100-½ 453 (500-½)	1100-¾ 453 (500-¾)		
<b>C</b> CIRCLING	1160-1 510 (600-1)	1260-1¼ 610 (700-1¼) 1260-2 610 (700-2)		

