

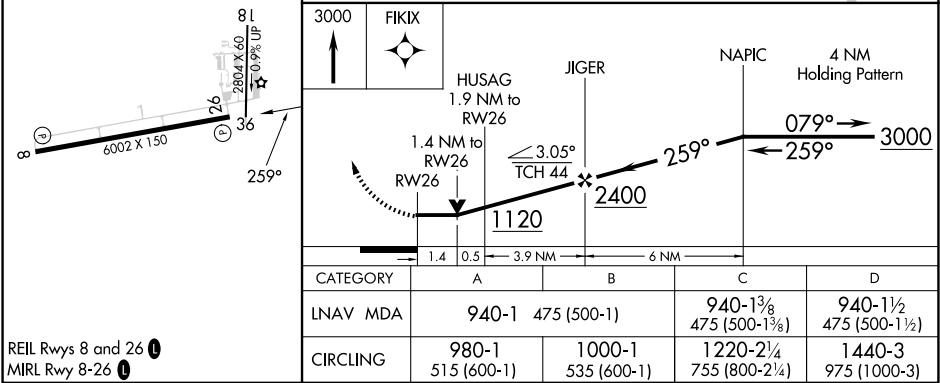
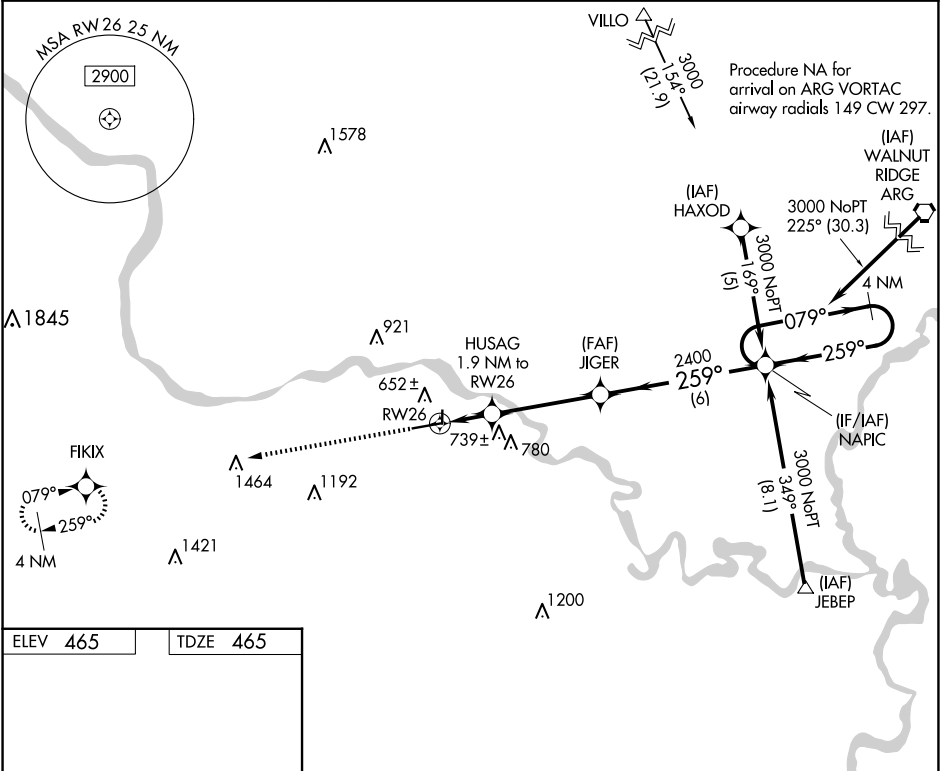
APP CRS	Rwy Ldg	6002
259°	TDZE	465
	Apt Elev	465

RNAV (GPS) RWY 26

BATESVILLE RGNL (BVX)

RNP APCH-GPS.	MISSED APPROACH: Climb to 3000 direct FIKIX and hold.
▼ Circling NA north of Rwy 8-26. Rwy 26 helicopter visibility reduction below ¾ SM NA.	
▲ Circling NA Rwy 18. Circling Rwy 36 NA at night.	

AWOS-3PT 126.375	MEMPHIS CENTER 126.85 281.55	UNICOM 122.8 (CTAF) 0
---------------------	---------------------------------	--------------------------



REIL Rwy 8 and 26 0
MIRL Rwy 8-26 0

SC-1, 07 AUG 2025 to 04 SEP 2025

SC-1, 07 AUG 2025 to 04 SEP 2025