

WAAS CH <b>87130</b> <b>W35A</b>	APP CRS <b>353°</b>	Rwy Ldg TDZE <b>580</b> Apt Elev <b>592</b>
--	------------------------	---

RNAV (GPS) RWY 35

MC GREGOR EXEC (PWG)

RNP APCH - GPS

▼

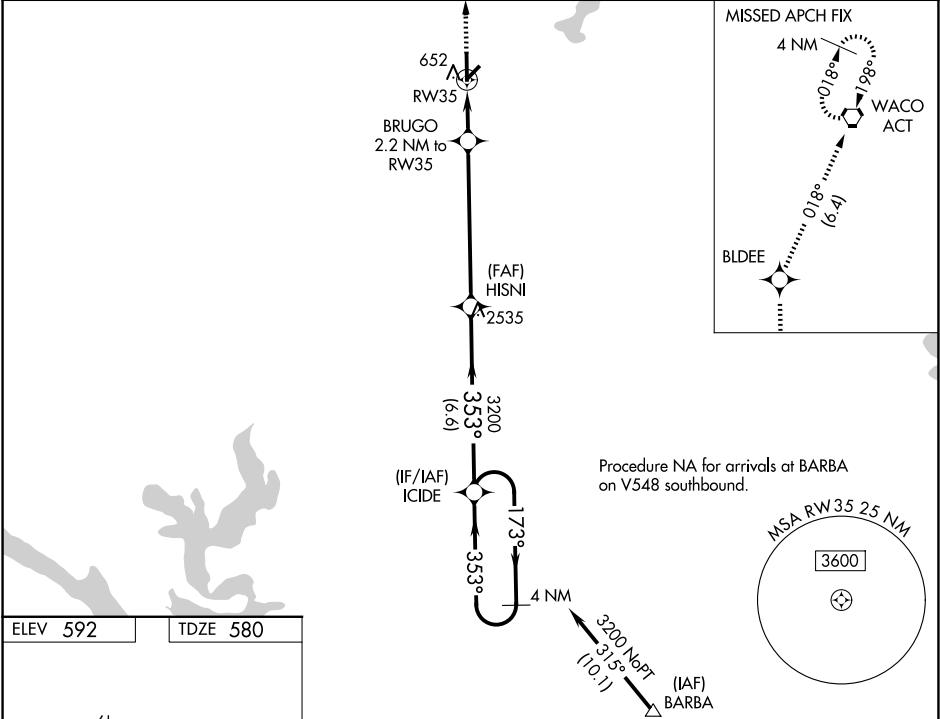
⚠

ASR

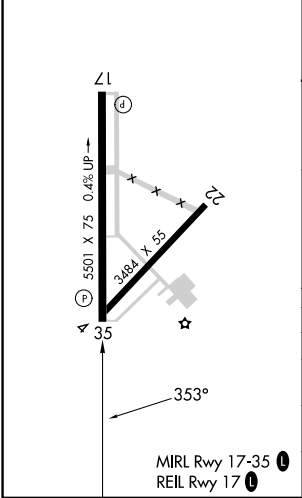
Baro-VNAV NA when using Waco Rgnl altimeter setting. For uncompensated Baro-VNAV systems, LNAV/VNAV NA below -16°C or above 54°C. When local altimeter setting not received, use Waco Rgnl altimeter setting and increase LPV DA to 861 feet; increase LNAV/VNAV DA to 861 feet; increase all MDAs 40 feet and LNAV visibility Cat B ¼ SM, and Circling visibility Cat B/C ¼ SM. Rwy 35 helicopter visibility reduction below ¾ SM NA.

MISSED APPROACH: Climb to 2500 direct BLDEE and on track 018° to ACT VORTAC and hold.

AWOS-3PT <b>135.525</b>	WACO APP CON★ <b>127.65 352.0</b>	UNICOM <b>123.05 (CTAF)</b> ①
----------------------------	--------------------------------------	----------------------------------



ELEV <b>592</b>	TDZE <b>580</b>
-----------------	-----------------



2500	BLDEE	ACT	HISNI	ICIDE	4 NM Holding Pattern
↑	018°	⬡	3200		
			BRUGO 2.2 NM to RW35		
			1300		
			353°		
			3200		
			173°		
			353°		
			3200		
			GP 3.00°		
			TCH 46		
			2.2 NM	5.9 NM	6.6 NM
CATEGORY	A	B	C	D	
LPV DA	830-¾	250 (300-¾)		NA	
LNAV/VNAV DA	830-¾	250 (300-¾)		NA	
LNAV MDA	960-1	380 (400-1)	960-1⅛ 380 (400-1⅛)	NA	
CIRCLING	1020-1 428 (500-1)	1060-1 468 (500-1)	1300-2 708 (800-2)	NA	