

VORTAC HYS <b>110.4</b> Chan <b>41</b>	APP CRS <b>332°</b>	Rwy Idg TDZE Apt Elev <b>6501</b> <b>1994</b> <b>1999</b>
--	------------------------	--

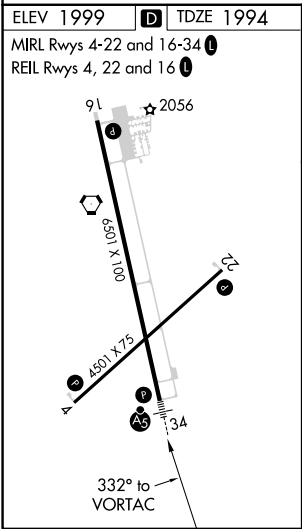
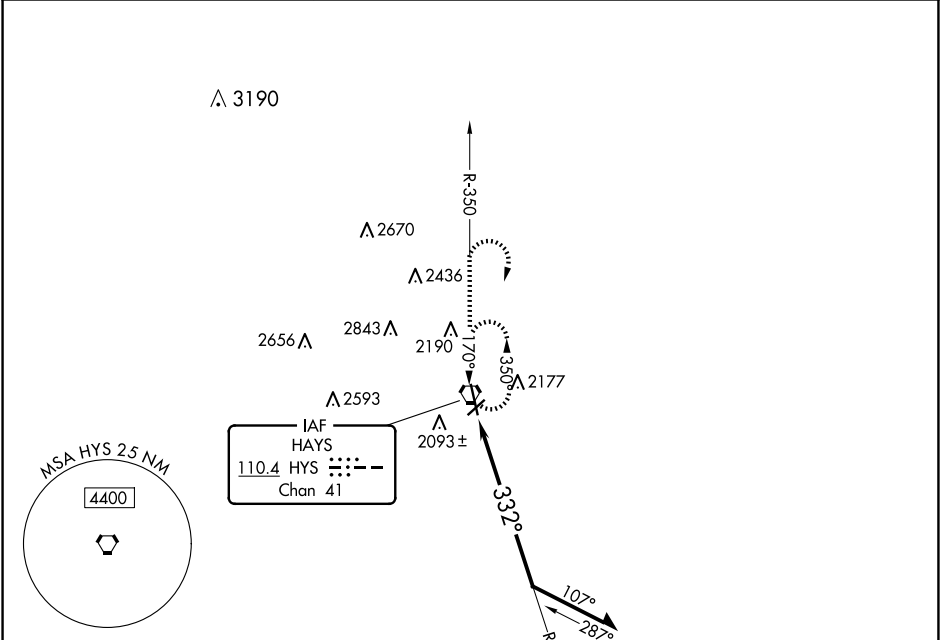
VOR RWY 34  
HAYS RGNL (HYS)

**⚠** When local alimeter setting not received, use Russell alimeter setting: increase all MDA 80 feet and visibility S-34 and Circling Cat C and D ¼ SM. Circling NA for Cat D northwest of Rwy 4 and west of Rwy 16. VDP NA with Russell alimeter setting.

**MALSR**

**MISSED APPROACH:** Climb to 3800 via HYS R-350 then climbing right turn to 3900 direct HYS VORTAC and hold.

AWOS-3PT <b>125.525</b>	KANSAS CITY CENTER <b>124.4 322.4</b>	UNICOM <b>122.8 (CTAF)</b> <b>1</b>
----------------------------	--	--



3800 3900 HYS

HYS R-350

HYS VORTAC

Remain within 10 NM

3800

HYS **2.2**

152° 332°

1.5 NM

CATEGORY	A	B	C	D
S-34	2480-1½ 486 (500-½)	2480-¾ 486 (500-¾)	2480-1 486 (500-1)	2480-1 486 (500-1)
CIRCLING	2480-1 481 (500-1)	2560-1½ 561 (600-1½)	2680-2¼ 681 (700-2¼)	2680-2¼ 681 (700-2¼)