

WAAS CH 78319 W34A	APP CRS 339°	Rwy Idg TDZE Apt Elev	6501 1994 1999
--	------------------------	-----------------------------	---

RNAV (GPS) RWY 34

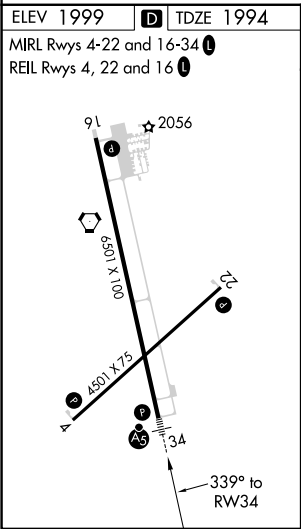
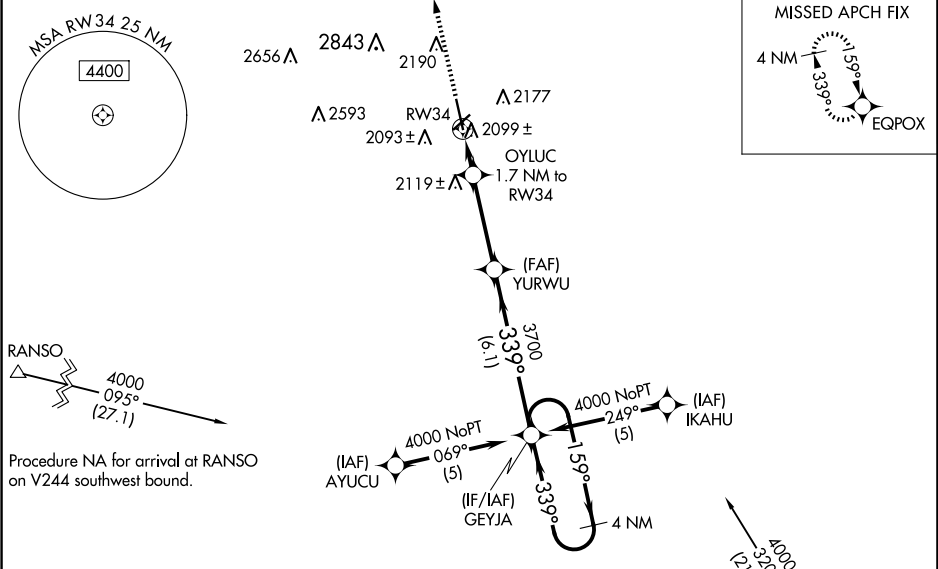
HAYS RGNL (HYS)

For uncompensated Baro-VNAV systems, LNAV/VNAV NA below -18°C (0°F) or above 45°C (113°F). DME/DME RNP-0.3 NA. When local altimeter setting not received, use Russell altimeter setting: increase LPV DA to 2263 feet; increase LNAV/VNAV DA to 2565 feet and visibility all Cats ¼ SM; increase all MDA 80 feet and visibility LNAV Cat C and Circling Cat C and D ¼ SM. Circling NA for Cat D northwest of Rwy 4 and west of Rwy 16. For inoperative MALSR when using Russell altimeter setting, increase LPV all Cats visibility to 1 mile. VDP and Baro-VNAV NA when using Russell altimeter setting.

MALSR

MISSED APPROACH:
Climb to 4000 direct
EQPOX and hold.

AWOS-3PT 125.525	KANSAS CITY CENTER 124.4 322.4	UNICOM 122.8 (CTAF) 0
----------------------------	--	---------------------------------



4000	EQPOX				
CATEGORY		A	B	C	D
LPV DA	2194-½ 200 (200-½)				
LNAV/VNAV DA	2496-1¼ 502 (500-1¼)				
LNAV MDA	2380-½ 386 (400-½)				2380-1 386 (400-1)
CIRCLING	2480-1	481 (500-1)	2560-1½ 561 (600-1½)	2680-2¼ 681 (700-2¼)	