

WAAS CH <b>99619</b> <b>W16A</b>	APP CRS <b>159°</b>	Rwy Idg TDZE <b>1999</b> Apt Elev <b>1999</b>	<b>6501</b> <b>1999</b> <b>1999</b>
--	------------------------	---	---

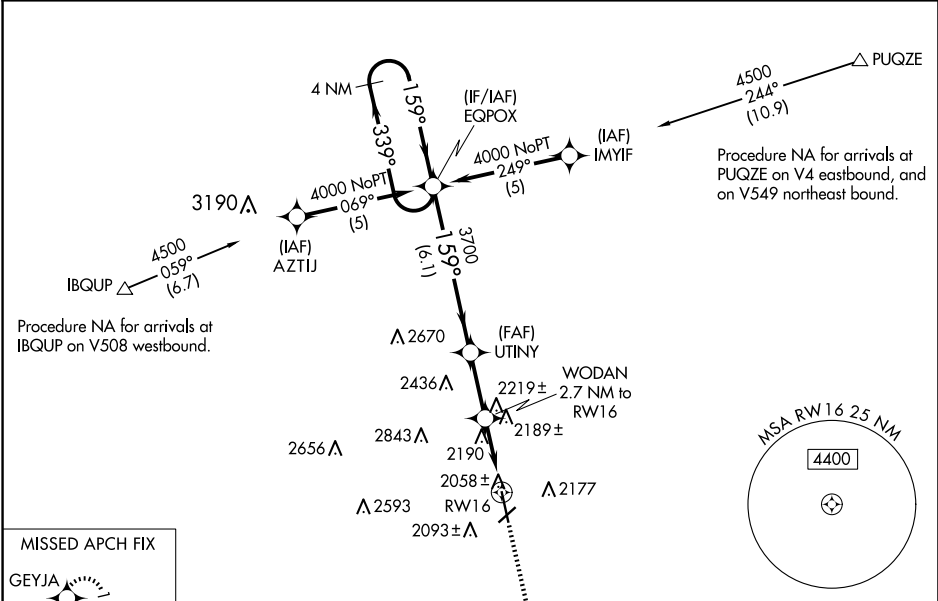
RNAV (GPS) RWY 16

HAYS RGNL (HYS)

**⚠** For uncompensated Baro-VNAV systems, LNAV/VNAV NA below -18°C (0°F) or above 45°C (113°F).  
**⚠** DME/DME RNP-0.3 NA. Visibility reduction by helicopters NA. When local altimeter setting not received, use Russell altimeter setting: increase LPV DA to 2318 feet; increase LNAV/VNAV DA to 2445 feet and visibility all Cats ½ SM; increase all MDA 80 feet and visibility LNAV and Circling Cat C and D ¼ SM. Baro-VNAV NA when using Russell altimeter setting. Circling NA for Cat D northwest of Rwy 4 and west of Rwy 16.

MISSED APPROACH:  
Climb to 4000 direct GEYJA and hold.

AWOS-3PT <b>125.525</b>	KANSAS CITY CENTER <b>124.4 322.4</b>	UNICOM <b>122.8 (CTAF) 0</b>
----------------------------	--	---------------------------------



ELEV 1999		D TDZE 1999	
4000		GEYJA	
GP 3.00° TCH 43		*2900	
CATEGORY		A	
LPV DA		2249-1 250 (300-1)	
LNAV/VNAV DA		2308-1 309 (400-1)	
LNAV MDA		2440-1 441 (500-1)	
CIRCLING		2480-1 481 (500-1)	

2440-1 ¼ 441 (500-1 ¼)		2440-1 ½ 441 (500-1 ½)	
2560-1 ½ 561 (600-1 ½)		2680-2 ¼ 681 (700-2 ¼)	

REIL Rws 4, 22 and 16

MRL Rws 4-22 and 16-34