


ILS or LOC RWY 34
HAYS RGNL (HYS)

MALSR		<p>MISSED APPROACH: Climb to 2600 then climbing right turn to 3800 direct NETTE LOM/HYS 4.8 DME and hold.</p>
-------	---	--

AWOS-3PT 125.525	KANSAS CITY CENTER 124.4 322.4	UNICOM 122.8 (CTAF) 0
----------------------------	--	--

ADF or DME REQUIRED

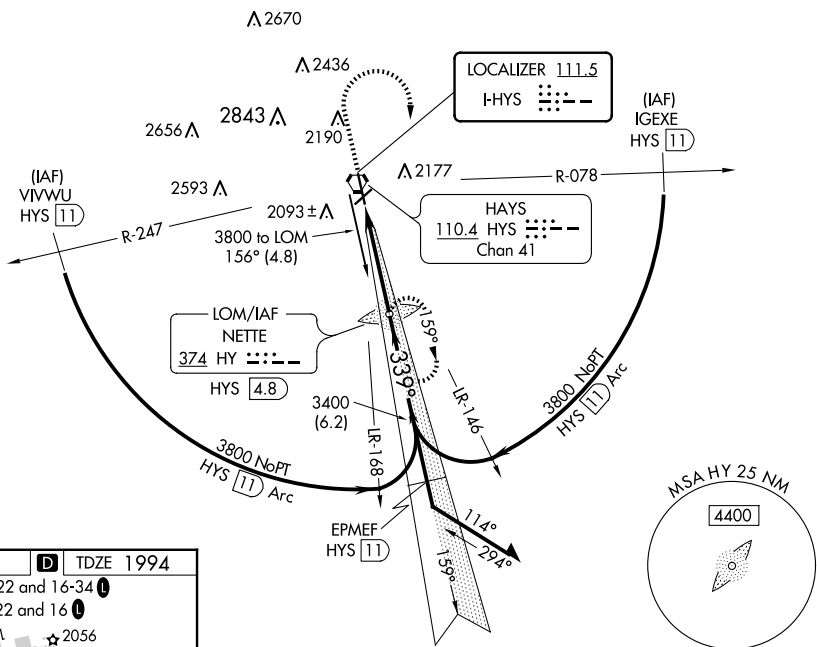


Diagram illustrating the intersection of two glidepaths:

- HYS VORTAC**: Frequency 2600, Bearing 3800.
- NETTE LOM**: Frequency 3400, Bearing 3800.
- Intersection Point**: Marked with an 'X' at 3343.
- Distance**: 4.1 NM from VORTAC to intersection.
- Angle**: 159° between the glidepaths.
- VGSI and ILS glidepath not coincident** (VGSI Angle 3.00/TCH 43).
- Remaining Distance**: 10 NM.

CATEGORY	A	B	C	D
S-ILS 34	2194- $\frac{1}{2}$ 200 (200- $\frac{1}{2}$)			
S-LOC 34	2340- $\frac{1}{2}$ 346 (400- $\frac{1}{2}$)			2340- $\frac{3}{4}$ 346 (400- $\frac{3}{4}$)
CIRCLING	2480-1 481 (500-1)	2560-1 $\frac{1}{2}$ 561 (600-1 $\frac{1}{2}$)	2680-2 $\frac{1}{4}$ 681 (700-2 $\frac{1}{4}$)	

NC-2, 07 AUG 2025 to 04 SEP 2025