

VORTAC VHP <b>116.3</b> Chan <b>110</b>	APP CRS <b>201°</b>	Rwy Idg <b>7000</b> TDZE <b>922</b> Apt Elev <b>922</b>
---	------------------------	---

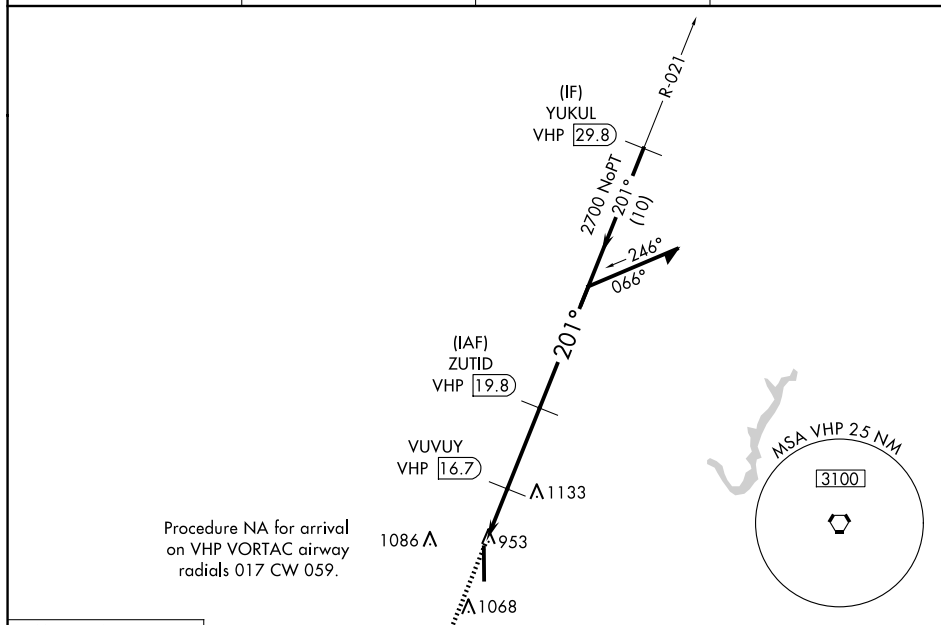
VOR RWY 18  
INDIANAPOLIS EXEC (TYQ)

DME required.

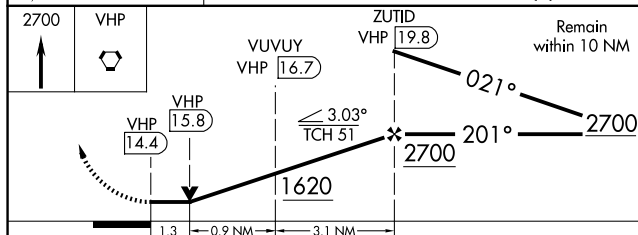
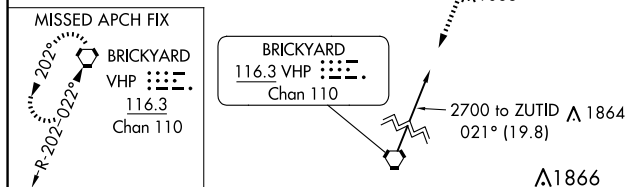
**T** Rwy 18 helicopter visibility reduction below  $\frac{3}{4}$  SM NA.

**MISSED APPROACH:** Climb to 2700 direct VHP VORTAC and hold.

AWOS-3PT <b>120.725</b>	INDIANAPOLIS APP CON <b>124.65 127.15 317.8</b>	CLNC DEL <b>118.175</b>	UNICOM <b>123.05 (CTAF) ①</b>
----------------------------	--	----------------------------	----------------------------------



EC-2, 07 AUG 2025 to 04 SEP 2025



CATEGORY	A	B	C	D
S-18	1400-1 478 (500-1)		1400-1 $\frac{3}{8}$ 478 (500-1 $\frac{3}{8}$ )	
<b>C</b> CIRCLING	1400-1 478 (500-1)		1440-1 $\frac{1}{2}$ 518 (600-1 $\frac{1}{2}$ )	1480-2 558 (600-2)

