

WAAS  
CH 53599  
W36A

APP CRS  
002°

Rwy Idg 7000  
TDZE 922  
Apt Elev 922

RNAV (GPS) RWY 36

INDIANAPOLIS EXEC (TYQ)

RNP APCH - GPS.

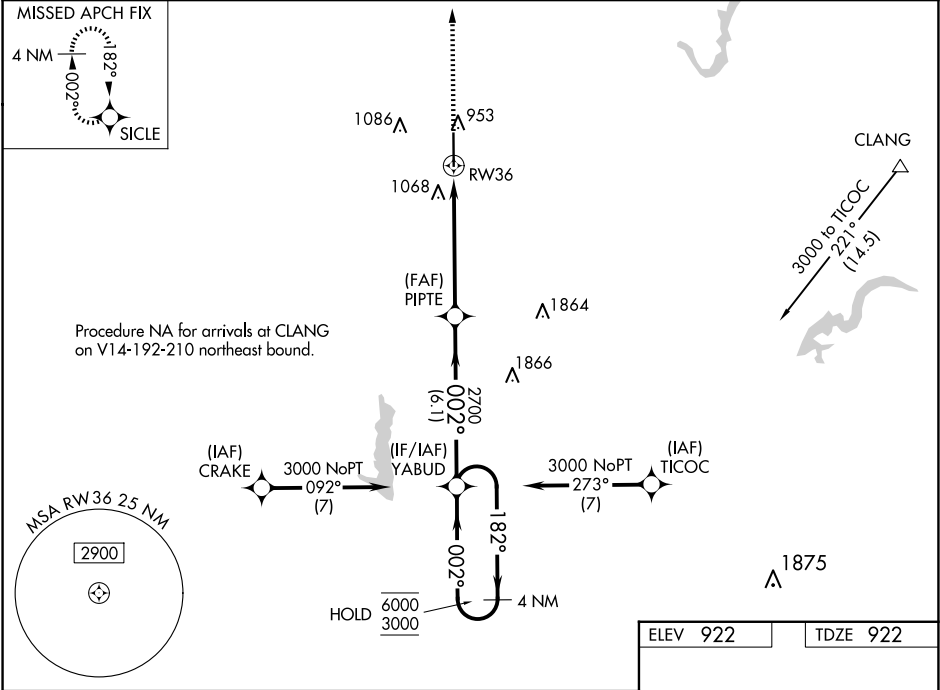
▼

▲

For uncompensated Baro-VNAV systems, LNAV/VNAV NA below -16°C or above 54°C.

MISSED APPROACH: Climb to 3000 direct SICL and hold.

AWOS-3PT 120.725	INDIANAPOLIS APP CON 124.65 127.15 317.8	CLNC DEL 118.175	UNICOM 123.05 (CTAF) 1
---------------------	---	---------------------	---------------------------



3000	SICL	YABUD	4 NM Holding Pattern	GP 3.00° TCH 53
1.3 NM to RW36	2700	182°	6000	
RW36	002°	182°	3000	
1.3	4.2 NM	6.1 NM		
CATEGORY	A	B	C	D
LPV DA	1172-3 <sup>4</sup>		250 (300-3 <sup>4</sup> )	
LNAV/VNAV DA	1351-1 <sup>1</sup> <sub>4</sub>		429 (500-1 <sup>1</sup> <sub>4</sub> )	
LNAV MDA	1380-1	458 (500-1)	1380-1 <sup>3</sup> <sub>8</sub>	458 (500-1 <sup>3</sup> <sub>8</sub> )
CIRCLING	1400-1	478 (500-1)	1440-1 <sup>1</sup> <sub>2</sub> 518 (600-1 <sup>1</sup> <sub>2</sub> )	1480-2 558 (600-2)
HIRL Rwy 18-36 1 REIL Rwy 18 and 36 1				