

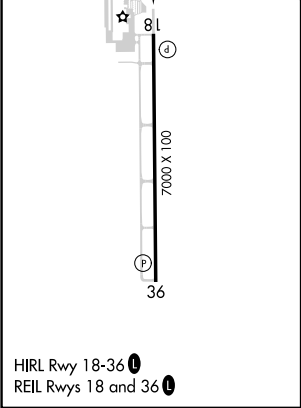
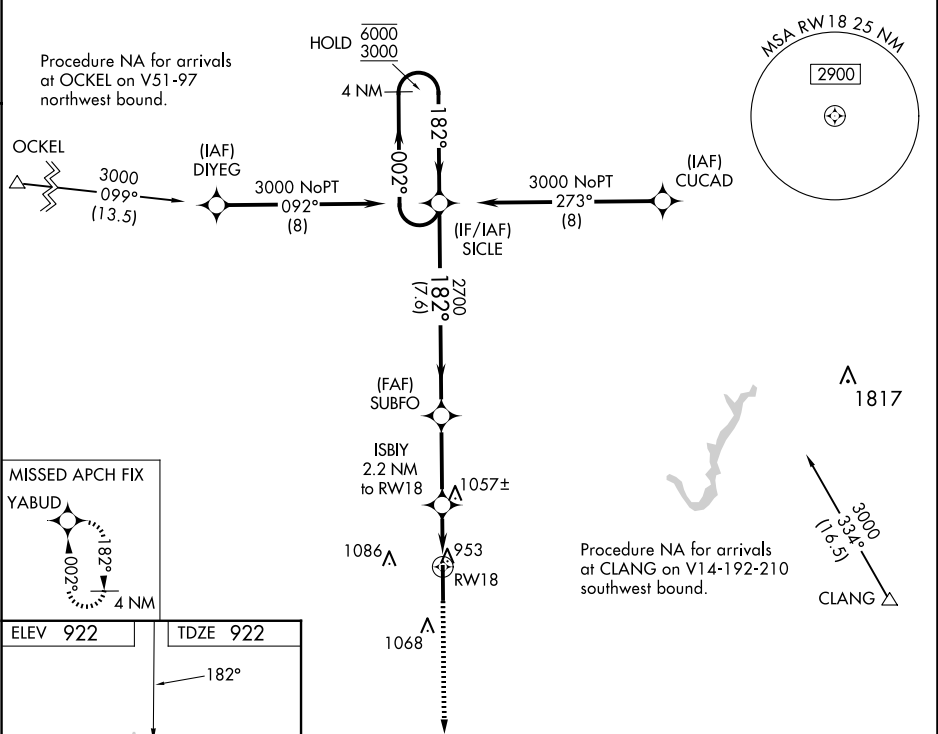
APP CRS	Rwy Idg	7000
182°	TDZE	922
	Apt Elev	922

RNAV (GPS) RWY 18

INDIANAPOLIS EXEC (TYQ)

RNP APCH - GPS.	MISSED APPROACH: Climb to 3000 direct YABUD and hold.
<div><div>▼</div><div>▲</div></div> <div>Rwy 18 helicopter visibility reduction below ¾ SM NA. For uncompensated Baro-VNAV systems, LNAV/VNAV NA below -16°C or above 54°C.</div>	

AWOS-3PT 120.725	INDIANAPOLIS APP CON 124.65 127.15 317.8	CLNC DEL 118.175	UNICOM 123.05 (CTAF) 0
---------------------	---	---------------------	---------------------------



4 NM Holding Pattern		SICLE	SUBFO		ISBIY 2.2 NM to RW18		1.1 NM to RW18		RW18		3000	YABUD
6000 ← 002°		182° →		182°		2700		1680		3000		YABUD
GP 3.00° TCH 51												
		7.6 NM		3.2 NM		1.1		1.1				
CATEGORY	A		B		C		D					
LNAV/ VNAV	DA	1216-7/8				294 (300-7/8)						
LNAV MDA	1320-1 398 (400-1)				1320-1 398 (400-1 1/8)							
CIRCLING	1380-1 458 (500-1)				1440-1 518 (600-1 1/2)				1480-2 558 (600-2)			