

HOOSIER FIVE DEPARTURE

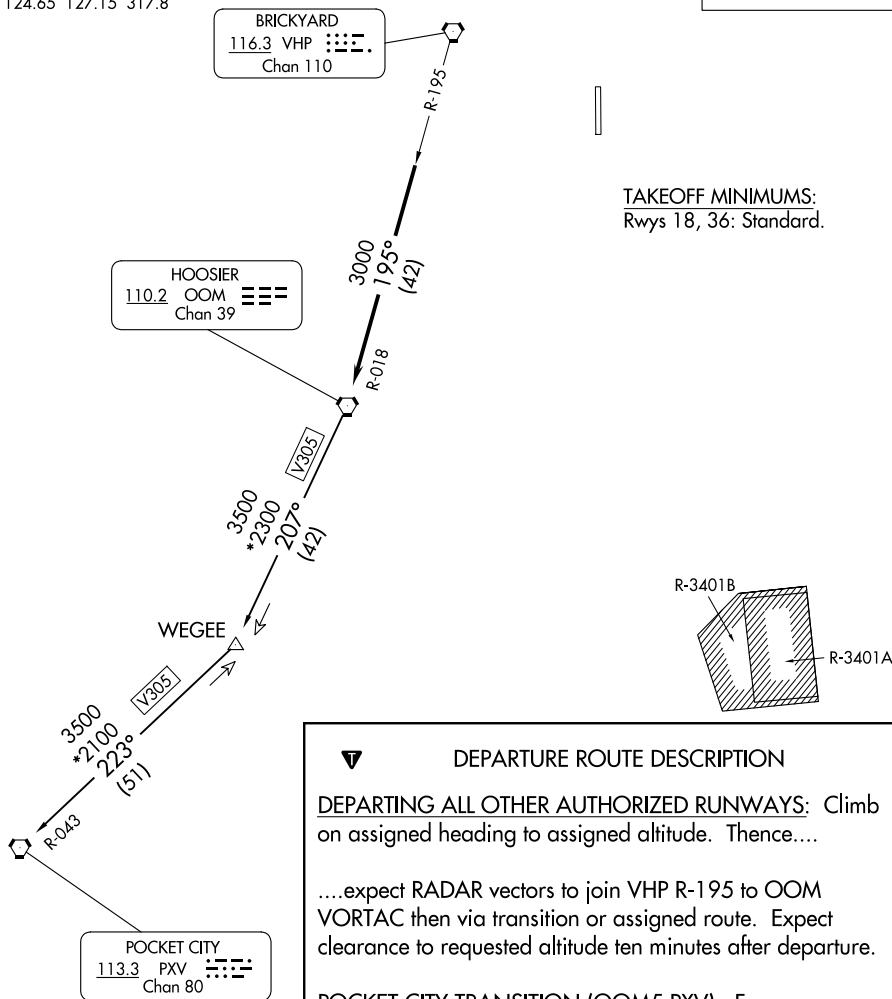
AL-5438 (FAA)

INDIANAPOLIS EXEC (TYQ)

INDIANAPOLIS, INDIANA

AWOS-3PT
120.725
INDIANAPOLIS DEP CON
124.65 127.15 317.8

**TOP ALTITUDE:
ASSIGNED BY ATC**



DEPARTURE ROUTE DESCRIPTION

DEPARTING ALL OTHER AUTHORIZED RUNWAYS: Climb on assigned heading to assigned altitude. Thence....

....expect RADAR vectors to join VHP R-195 to OOM
VORTAC then via transition or assigned route. Expect
clearance to requested altitude ten minutes after departure.

POCKET CITY TRANSITION (OOM5.PXV): From over OOM VORTAC via OOM R-207 to WEGEE, then via PXV R-043 to PXV VORTAC.

NOTE: RADAR required.

NOTE: Select appropriate localizer/DME frequency/channel prior to departure.

NOTE: Turbojets accelerate to 250K until reaching 10000, if unable advise ATC.

NOTE: Assigned to aircraft with a requested altitude of 11 000 or above.

NOTE: Chart not to scale.

HOOSIER FIVE DEPARTURE

(OOM5.OOM) 01FEB18

INDIANAPOLIS, INDIANA
INDIANAPOLIS EXEC (TYQ)

EC-2, 07 AUG 2025 to 04 SEP 2025