

APP CRS
183°

Rwy Idg
3798

TDZE
585

Apt Elev
585

RNAV (GPS) RWY 18

JAMES CLEMENTS MUNI (3CM)

RNP APCH - GPS.

NA

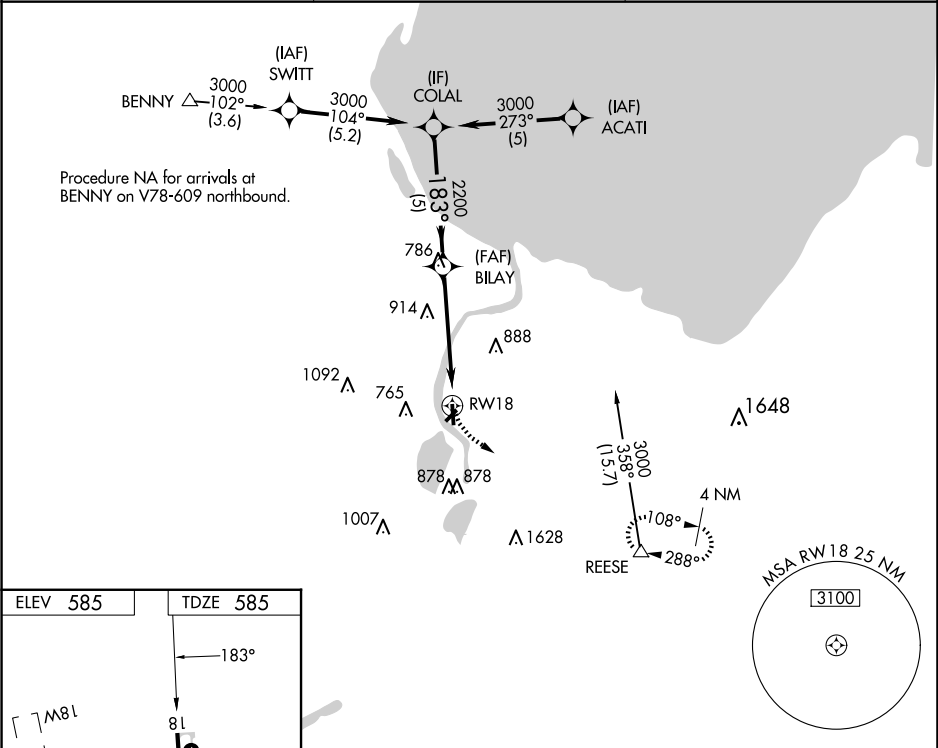
Circling NA to Rwys 18W, 36W, 13W, 31W, 9W and 27W. Circling NA southeast of Rwys 23 and 36. Rwy 18 helicopter visibility reduction below 1 SM NA. Use Saginaw County H W Browne altimeter setting. Procedure NA at night.

MISSED APPROACH: Climbing left turn to 3000 direct REESE and hold.

HYX AWOS-3PT
118.325

GREAT LAKES APP CON ★
120.95 235.625

UNICOM
122.725 (CTAF) 0



ELEV 585

TDZE 585

COLAL

VGSI and descent angles not coincident (VGSI Angle 4.00/TCH 27).

3000

BILAY

2200

2.96° TCH 45

RW18

REASE

CATEGORY	A	B	C	D
LNAV MDA	1260-1	675 (700-1)	1260-2 675 (700-2)	NA
CIRCLING	1260-1	675 (700-1)	1260-2 675 (700-2)	NA

EC-1, 07 AUG 2025 to 04 SEP 2025

EC-1, 07 AUG 2025 to 04 SEP 2025