

WAAS CH 63014 W29A	APP CRS 290°	Rwy Idg TDZE Apt Elev	5101 1724 1730
--	------------------------	-----------------------------	---

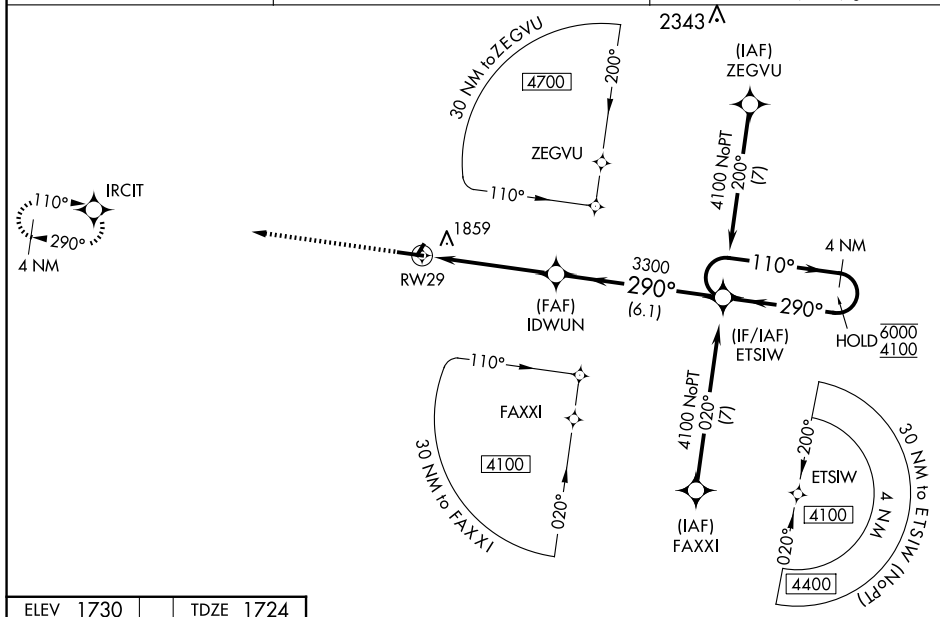
RNAV (GPS) RWY 29
SCHUYLKILL COUNTY/JOE ZERBEY (ZER)

RNP APCH - GPS

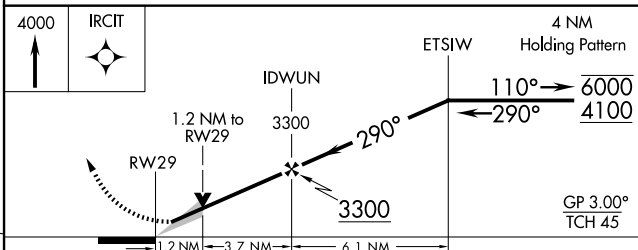
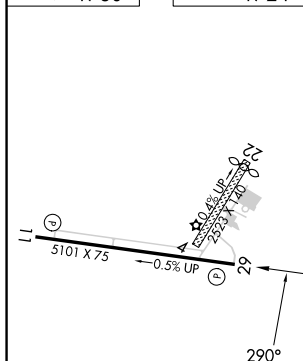
NA Circling NA to Rwy's 4 and 22. Baro-VNAV NA when using Selinsgrove altimeter setting. For uncomputerized Baro-VNAV systems, LNAV/VNAV NA below -18°C or above 54°C. VDP NA when using Selinsgrove altimeter setting. When local altimeter setting not received, use Selinsgrove altimeter setting: increase LPV DA to 2156 feet and visibility ½ SM; LNAV/VNAV DA to 2376 feet and visibility ¾ SM; increase all MDAs 240 feet and visibility LNAV Cats C/D ¾ SM and Circling Cats C/D ½ SM.

MISSED APPROACH:
Climb to 4000 direct
IRCIT and hold.

AWOS-3 127.575	HARRISBURG APP CON 118.25 269.45	UNICOM 123.075 (CTAF) 0
--------------------------	--	-----------------------------------



ELEV	1730		TDZE	1724
------	------	--	------	------



CATEGORY	A	B	C	D
LPV DA	1924-¾ 200 (200-¾)			
RNAV/ VNAV DA	2144-1½ 420 (500-1½)			
RNAV MDA	2120-1	396 (400-1)	2120-1½	396 (400-1½)
C CIRCLING	2160-1 430 (500-1)	2180-1 450 (500-1)	2180-1½ 450 (500-1½)	2280-2 550 (600-2)