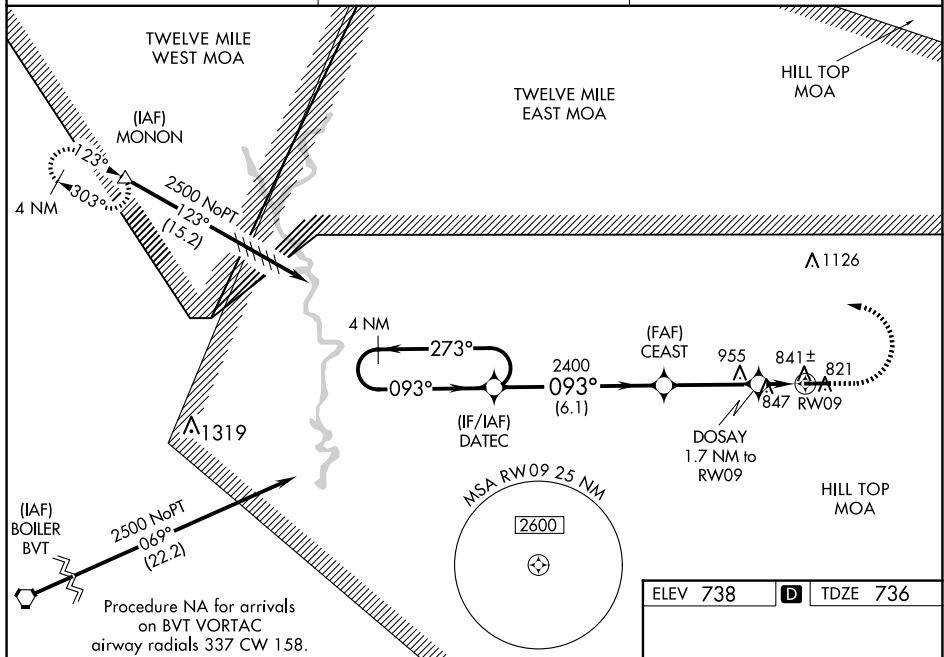


WAAS CH 45820 W09A	APP CRS 093°	Rwy Idg 5001 TDZE 736 Apt Elev 738
--	------------------------	---

RNAV (GPS) RWY 9

LOGANSPORT/CASS COUNTY (GGP)

RNP APCH - GPS.		<p>▼ For uncompensated Baro-VNAV systems, LNAV/VNAV NA below -16°C or above 39°C. When local altimeter setting not received, use Grissom ARB altimeter setting and increase LPV DA to 1026 feet, increase LNAV/VNAV DA to 1057 feet and visibilities all Cats ½ SM. Increase all MDAs 40 feet and LNAV visibility Cat C/D ½ SM, and Circling visibility Cat D ¼ SM. Helicopter visibility reduction below 1 SM NA. Baro-VNAV and VDP NA when using Grissom ARB altimeter setting.</p>		<p>MISSED APPROACH: Climb to 1200, then climbing left turn to 2500 direct MONON and hold.</p>	
<p>AWOS-3P 118.5</p>		<p>GRISSOM APP CON★ 121.05 338.275</p>		<p>UNICOM 122.8 (CTAF) 0</p>	



4 NM Holding Pattern

VGS and RNAV glidepath not coincident (VGS Angle 3.00/TCH 24).

DATEC

CEAST

2500 ← 273° 093° →

2400

DOSAY 1.7 NM to RW09

1.1 to RW09

GP 3.00° TCH 40

2400

1300

6.1 NM

3.4 NM

0.6

1.1

RW09

CATEGORY	A	B	C	D
LPV DA	991-1 255 (300-1)			
LNAV/VNAV DA	1022-1 286 (300-1)			
LNAV MDA	1100-1 364 (400-1)			
CIRCLING	1180-1 442 (500-1)	1200-1 462 (500-1)	1280-1½ 542 (600-1½)	1400-2 662 (700-2)