

WAAS CH 70703 W27A	APP CRS 273°	Rwy Idg TDZE Apt Elev	5001 738 738
--	------------------------	-----------------------------	---

RNAV (GPS) RWY 27

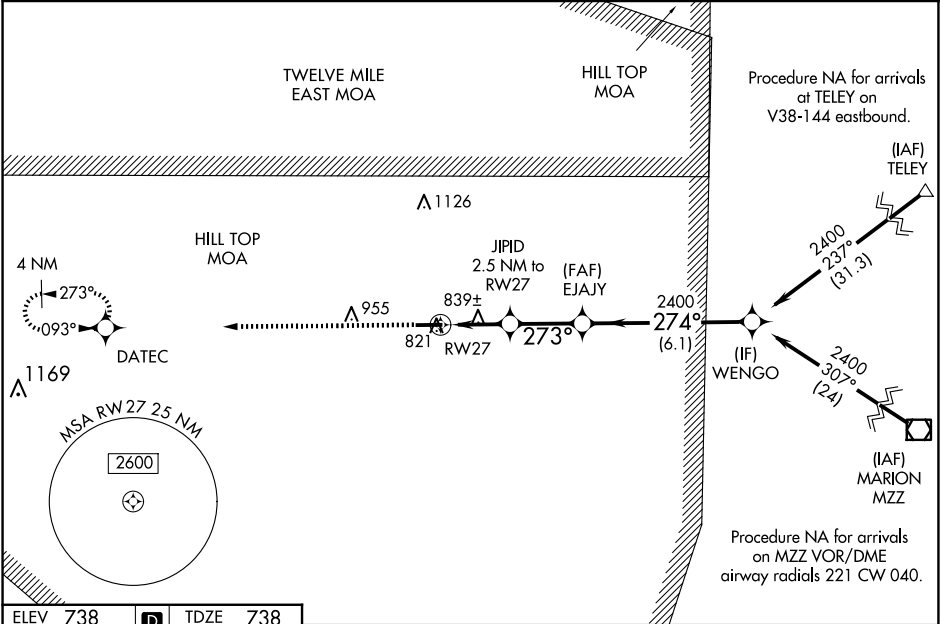
LOGANSPORT/CASS COUNTY (GGP)

Baro-VNAV NA when using Grissom ARB altimeter setting. For uncompensated Baro-VNAV systems, LNAV/VNAV NA below -16°C (4°F) or above 39°C (102°F). DME/DME RNP-0.3 NA.

Δ NA VDP NA with Grissom ARB altimeter setting. When local altimeter setting not received, use Grissom ARB altimeter setting: increase LPV DA to 974 feet; increase LNAV/VNAV DA to 1056 feet and all visibilities ½ SM; increase all MDAs 40 feet and Circling visibility Cat D ½ SM.

MISSED APPROACH:
Climb to 2500 direct DATEC and hold.

AWOS-3P 118.5	GRISSOM APP CON★ 121.05 338.275	UNICOM 122.8 (CTAF) 0
-------------------------	---	---------------------------------



ELEV 738	D	TDZE 738
-----------------	----------	-----------------

2500

DATEC

VGSI and RNAV glidepath not coincident (VGSI Angle 3.00/TCH 25).

* LNAV only

CATEGORY	A	B	C	D
LPV DA		938-¾	200 (200-¾)	
LNAV/VNAV DA		1020-⅞	282 (300-⅞)	
LNAV MDA		1100-1	362 (400-1)	
CIRCLING	1180-1 442 (500-1)	1200-1 462 (500-1)	1280-1½ 542 (600-1½)	1400-2 662 (700-2)