

WAAS
CH **93928**
W30A

APP CRS
301°

Rwy Idg
TDZE **25**
Apt Elev **25**

Rwy Idg

3760

RNAV (GPS) RWY 30

LA PORTE MUNI (T41)

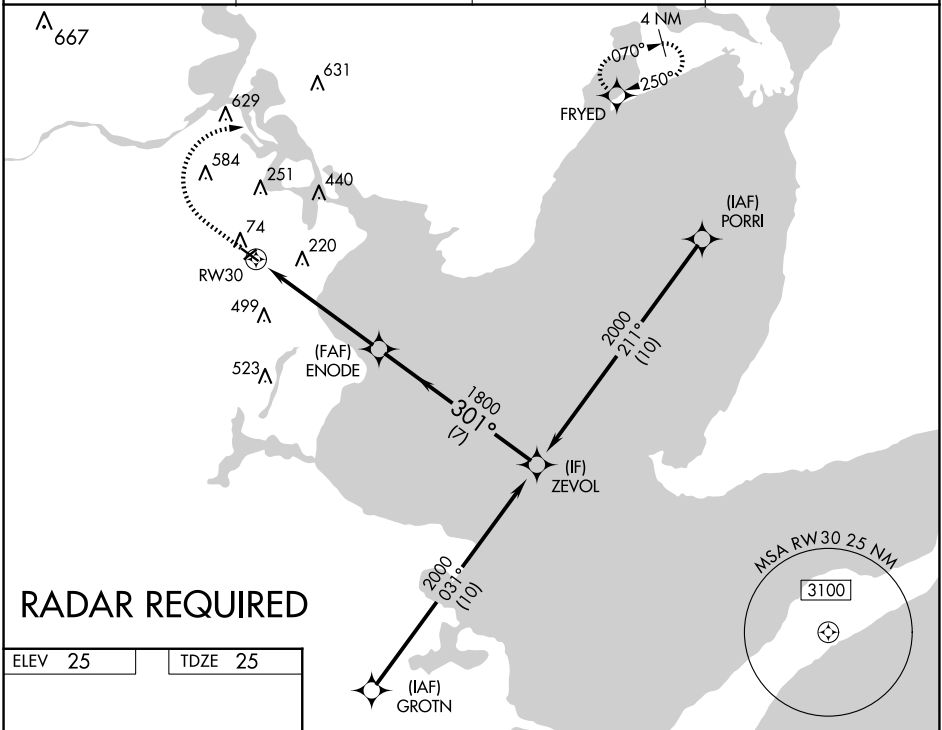
RNP APCH.

▼

Baro-VNAV NA. Use Ellington altimeter setting. Rwy 30 helicopter visibility reduction below $\frac{3}{4}$ SM NA. Circling Rwy 5, 23 NA at night.

MISSED APPROACH: Climb to 600 then climbing right turn to 2000 direct FRYED and hold.

AWOS-3PT 120.275	HOUSTON APP CON 134.45 284.0	CLNC DEL 125.6	UNICOM 122.7 (CTAF) 0
----------------------------	--	--------------------------	---------------------------------



ELEV 25

TDZE 25

REIL Rwy 12 0

MIRL Rwy 5-23 and 12-30 0

	600	2000	FRYED	
			ZEVOL	
	5.5 NM		7 NM	
CATEGORY	A	B	C	D
LPV DA	291-1 266 (300-1)			NA
LNAV/VNAV DA	454-1 429 (500-1 1/4)			NA
LNAV MDA	520-1 495 (500-1)		520-1 495 (500-1 3/8)	NA
CIRCLING	600-1 575 (600-1)	620-1 595 (600-1)	880-2 855 (900-2 1/2)	NA

SC-5, 07 AUG 2025 to 04 SEP 2025

SC-5, 07 AUG 2025 to 04 SEP 2025