

LEONA FOUR DEPARTURE

AL-5433 (FAA)

LA PORTE MUNI (T41)

LA PORTE, TEXAS

TOP ALTITUDE: ASSIGNED BY ATC

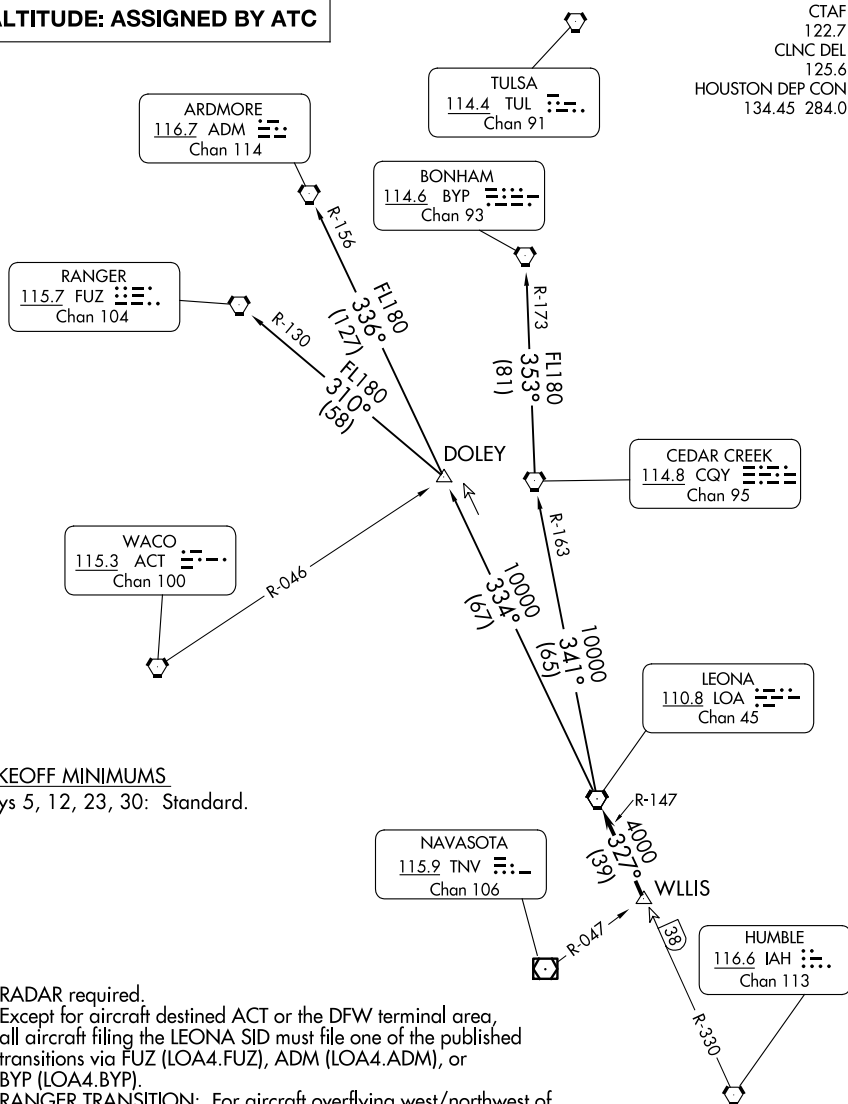
CTAF

CLNC DEL

125.6

HOUSTON DEP CON

134.45 284.0



TAKEOFF MINIMUMS

Rwys 5, 12, 23, 30: Standard.

NOTE: RADAR required.

NOTE: Except for aircraft destined ACT or the DFW terminal area, all aircraft filing the LEONA SID must file one of the published transitions via FUZ (LOA4.FUZ), ADM (LOA4.ADM), or BYP (LOA4.BYP).

NOTE: RANGER TRANSITION: For aircraft overflying west/northwest of the DFW terminal area FL240 and above.

NOTE: ARDMORE TRANSITION: For aircraft overflying north/northwest of the DFW terminal area FL240 and above.

NOTE: BONHAM TRANSITION: For aircraft overflying/landing TUL VORTAC FL240 and above.

NOTE: Chart not to scale.

(CONTINUED ON FOLLOWING PAGE)

LEONA FOUR DEPARTURE

(LOA4.LOA) 07OCT21

LA PORTE, TEXAS

LA PORTE MUNI (T41)

SC-5, 07 AUG 2025 to 04 SEP 2025