

VORTAC	CGT	Rwy Ldg	4899
114.2	APP CRS	TDZE	634
Chan 89	084°	Apt Elev	634

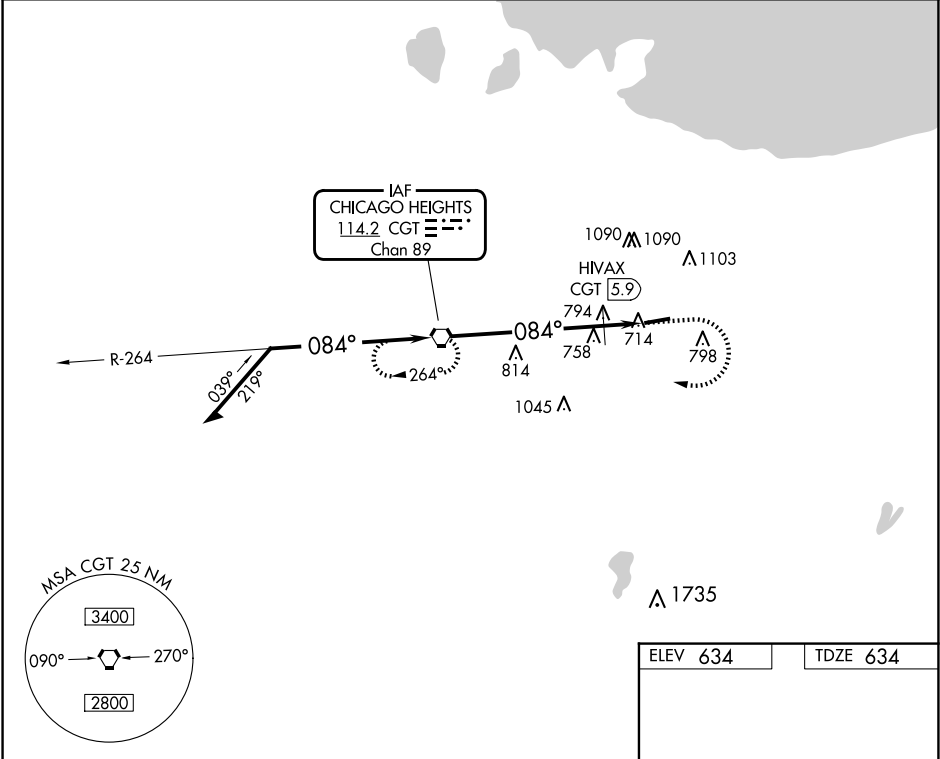
VOR RWY 8

GRIFFITH-MERRILLVILLE (05C)

<p>NA</p> <p>Obtain local altimeter setting on CTAF; when not received, use Chicago Midway Intl altimeter setting and increase all MDAs 60 feet. Visibility reduction by helicopters NA. Procedure NA at night.</p>	<p>MISSED APPROACH: Climb to 1100 then climbing right turn to 2300 direct CGT VORTAC and hold.</p>
--	---

CHICAGO APP CON
133.1 285.6

UNICOM
123.0 (CTAF) 0



VGSi and descent angles not coincident (VGSi Angle 3.50/TCH 44). Remain within 10 NM				
*1220 when using Chicago Midway Intl altimeter setting.				
5.9 NM 1.5				
CATEGORY	A	B	C	D
S-8	1160-1	526 (600-1)	NA	NA
CIRCLING	1200-1	566 (600-1)	NA	NA
HIVAX FIX MINIMUMS				
S-8	1060-1	426 (500-1)	NA	NA
CIRCLING	1200-1	566 (600-1)	NA	NA

ELEV 634	TDZE 634
REIL Rwy 8 and 26 0	
MIRL Rwy 8-26 0	
FAF to MAP 7.4 NM	
Knots	60 90 120 150 180
Min:Sec	7:24 4:56 3:42 2:58 2:28