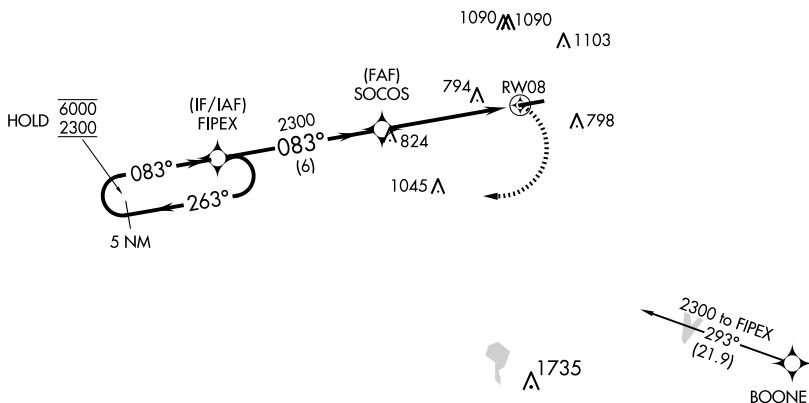
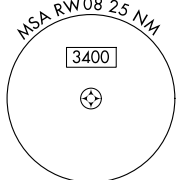


25163

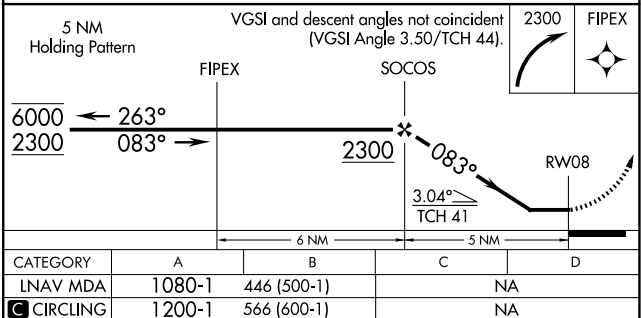
RNAV (GPS) RWY 8  
GRIFFITH-MERRILLVILLE (05C)

**MISSED APPROACH:** Climbing right turn to 2300 direct FIPEX and hold.

UNICOM  
123.0 (CTAF) **L**

REIL Rwy 8 and 26

MIRL Rwy 8-26



GRIFFITH-MERRILLVILLE (Ø5C)  
RNAV (GPS) RWY 8

EC-2, 07 AUG 2025 to 04 SEP 2025