

WAAS CH <b>56528</b> <b>W23A</b>	APP CRS <b>230°</b>	Rwy Ldg <b>3741</b> TDZE <b>1041</b> Apt Elev <b>1041</b>
--	------------------------	---

RNAV (GPS) RWY 23

MIAMI UNIVERSITY (OXD)

RNP APCH - GPS.

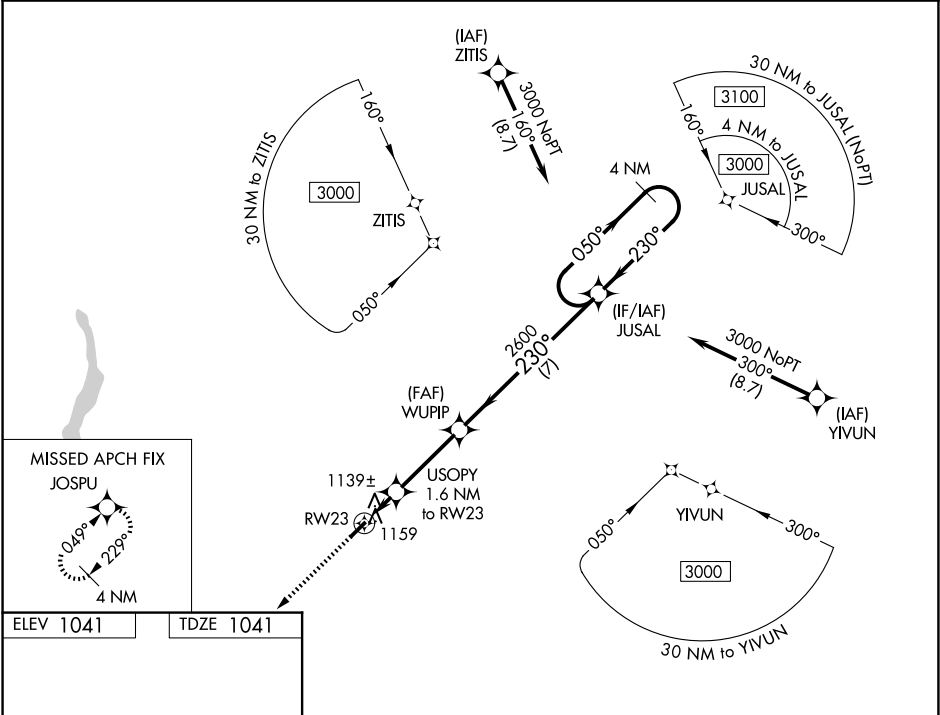
▼

▲ NA

When Circling to Rwy 5 at night, operational VGSI required, remain on or above VGSI glidepath until threshold. Rwy 23 helicopter visibility reduction below ¾ SM NA. When local altimeter setting not received, use Covington altimeter setting and increase all MDA 100 feet, increase LP Cat C visibility ¾ mile, increase LNAV and Circling Cat C visibility ¼ mile.

MISSED APPROACH:  
Climb to 3000 direct JOSPU and hold.

AWOS-3PT <b>118.625</b>	CINCINNATI APP CON <b>121.0 254.25</b>	UNICOM <b>122.8 (CTAF)</b>	<b>122.9 0</b>
----------------------------	---	-------------------------------	----------------



**3000**  
  
**JOSPU**

**VGSI and descent angles not coincident**  
**(VGSI Angle 3.00°/TCH 28°).**

**USOPY**  
 1.6 NM to RW23

**WUPIP**

**JUSAL**

4 NM Holding Pattern

**3000**  
 050° →  
 ← 230°

**2600**  
 230°

**1580**  
 3.00° TCH 45°

RW23

1.6 NM      3.2 NM      7 NM

CATEGORY		A		B	C	D
LP	MDA	1400-1		359 (400-1)		NA
LNAV	MDA	1420-1	379 (400-1)		1420-1½ 379 (400-1½)	NA
CIRCLING		1460-1 419 (500-1)	1600-1 559 (600-1)		1600-1½ 559 (600-1½)	NA

**MIRL Rwy 5-23**

**REIL Rws 5 and 23**