

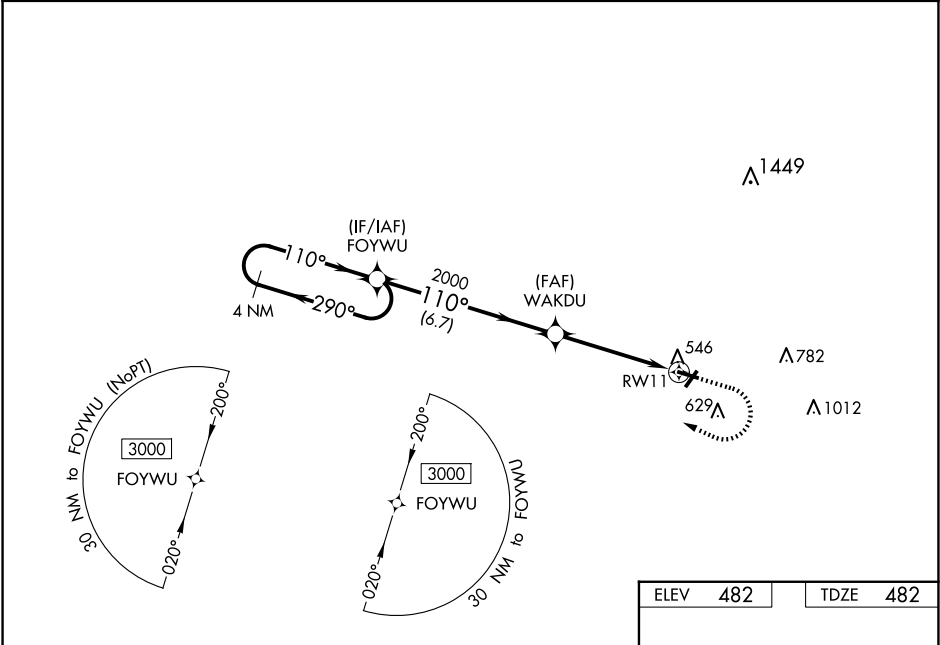
WAAS CH 82231 W11A	APP CRS 110°	Rwy Idg TDZE 482 Apt Elev 482
--	------------------------	---

RNAV (GPS) RWY 11

OLNEY-NOBLE (OLY)

RNP APCH.	<div><div>▼</div>Baro-VNAV NA when using Evansville altimeter setting. For uncompensated Baro-VNAV systems, LNAV/VNAV NA below -15°C or above 54°C. When local altimeter setting not received, use <div>▲</div> Evansville altimeter setting and increase all DAs 126 feet, MDAs 140 feet; increase LNAV/VNAV all Cats visibility ½ SM, LNAV Cat C/D ¾ SM and Circling Cat C ¼ SM and Cat D ½ SM.</div>	MISSED APPROACH: Climb to 1500 then climbing right turn to 3000 direct FOYWU and hold.
-----------	---	---

AWOS-3 119.275	KANSAS CITY CENTER 124.3 269.15	UNICOM 123.0 (CTAF) 0
--------------------------	---	---------------------------------



VGSI and RNAV glidepath not coincident (VGSI Angle 3.00/TCH 22).					1500 3000 FOYWU	
4 NM Holding Pattern						
FOYWU						
3000 ← 290° 110° →					WAKDU 2000	
GP 3.00° TCH 40					RW11	
6.7 NM					4.6 NM	
CATEGORY	A	B	C	D		
LPV DA	732-1 250 (300-1)					
LNAV/ VNAV DA	962-1½ 480 (500-1½)					
LNAV MDA	920-1	438 (500-1)	920-1¼ 438 (500-1¼)			
CIRCLING	960-1	478 (500-1)	960-1½ 478 (500-1½)	1180-2¼ 698 (700-2¼)		
REIL Rwy 4 and 11					MIRL Rwy 4-22 and 11-29	

EC-3, 07 AUG 2025 to 04 SEP 2025

EC-3, 07 AUG 2025 to 04 SEP 2025