

LOC/DME I-LZW  
**110.5**  
Chan **42**

APP CRS  
**110°**

Rwy Idg  
TDZE **482**  
Apt Elev **482**

LOC RWY 11

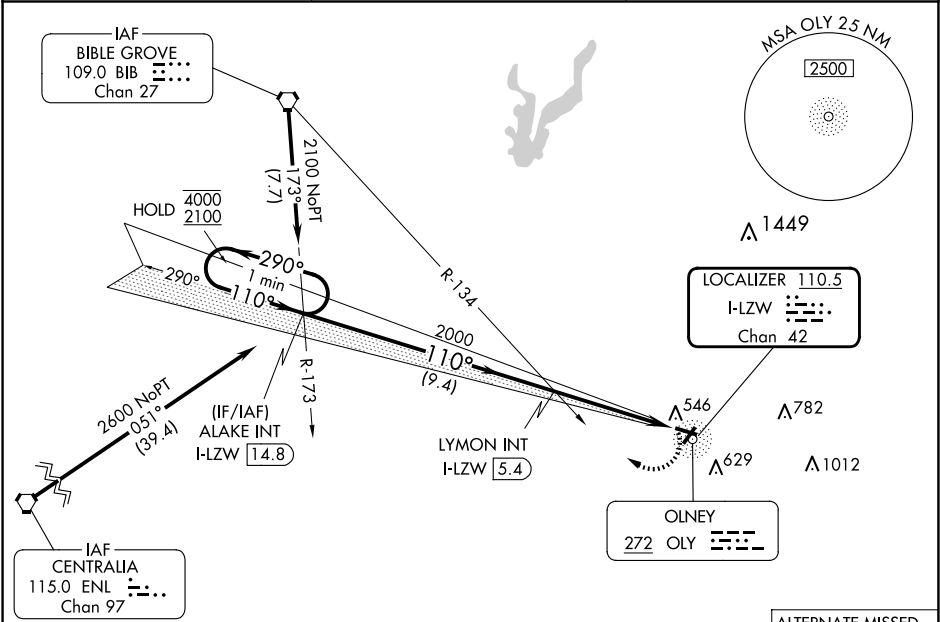
OLNEY-NOBLE (OLY)

▼

▲

MISSED APPROACH: Climbing right turn to 2400 on heading 290° and BIB VORTAC R-173 to ALAKE INT/I-LZW LOC/DME 14.8 DME and hold.

AWOS-3 <b>119.275</b>	KANSAS CITY CENTER <b>124.3 269.15</b>	UNICOM <b>123.0 (CTAF) 0</b>
--------------------------	---	---------------------------------



ELEV 482

TDZE 482

110°

4099 X 7.5

0.3% UP

3588 X 40

REIL Rwy 4 and 11  
MIRL Rwy 4-22 and 11-29

One Minute Holding Pattern

VGSI and descent angles not coincident (VGSI Angle 3.00/TCH 22).

ALAKE INT I-LZW 14.8

LYMON INT I-LZW 5.4

2400

hdg 290°

BIB R-173

ALAKE INT

4000 2100

290° 110°

2000

3.03° TCH 45

9.4 NM

3.3 NM

1.3 NM

ALTERNATE MISSED APCH FIX

BIB GROVE BIB 109.0 Chan 27

161°

341°

R-161

CATEGORY	A	B	C	D
S-11	920-1 438 (500-1)	940-1 458 (500-1)	920-1¼ 478 (500-1½)	438 (500-1¼) 1180-2¼ 698 (700-2¼)
CIRCLING	920-1 438 (500-1)	940-1 458 (500-1)	960-1½ 478 (500-1½)	1180-2¼ 698 (700-2¼)