

WAAS CH <b>97321</b> <b>W01A</b>	APP CRS <b>010°</b>	Rwy Idg TDZE <b>626</b> Apt Elev <b>638</b>
--	------------------------	---

RNAV (GPS) RWY 1L

TULSA RIVERSIDE (RVS)

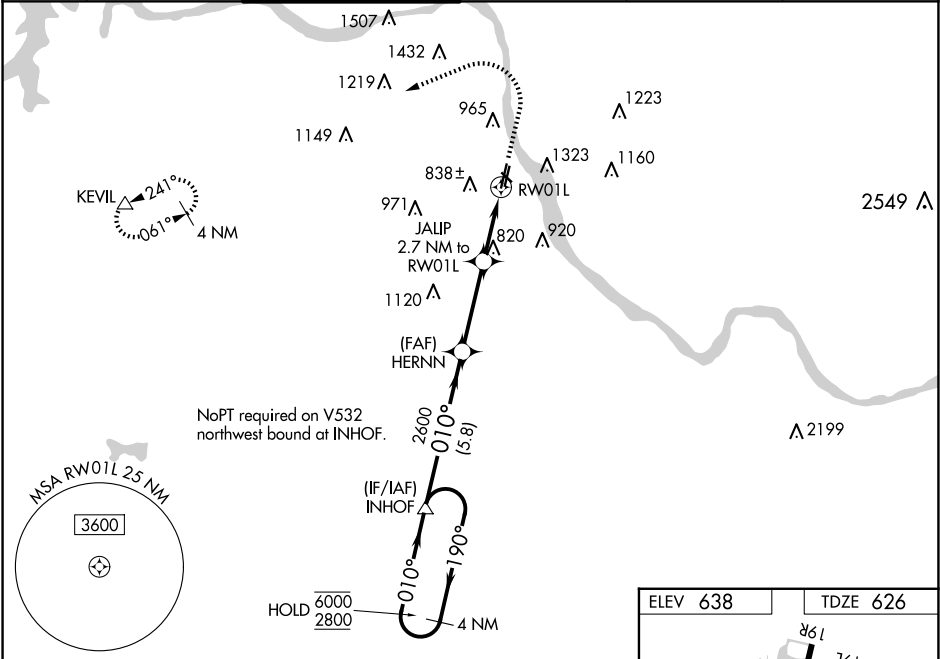
RNP APCH - GPS.

⚠

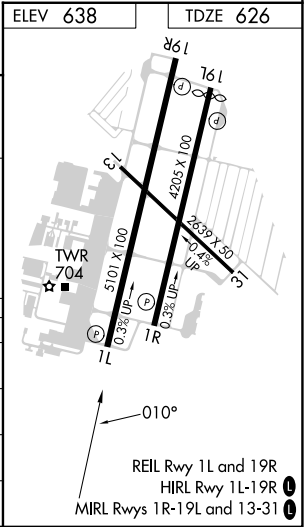
Circling NA northeast of Rwy 31 and 19L. For uncompensated Baro-VNAV systems, LNAV/VNAV NA below -16°C or above 54°C. Baro-VNAV and VDP NA when using TUL altimeter setting. When local altimeter setting not received, use TUL altimeter setting: increase LPV DA to 871 feet; increase LNAV/VNAV DA to 1152 feet and all visibilities 1⁄8 SM. Increase all MDAs 40 feet and Circling visibility Cat C 1⁄4 SM.

MISSED APPROACH: Climb to 1100 then climbing left turn to 2600 direct KEVIL and hold.

ATIS <b>126.5</b>	TULSA APP CON <b>134.7</b>	RIVERSIDE TOWER★ <b>120.3</b> (CTAF) <b>0</b>	GND CON <b>121.7</b>	CLNC DEL <b>124.5</b>	UNICOM <b>122.95</b>
----------------------	-------------------------------	--	-------------------------	--------------------------	-------------------------



4 NM Holding Pattern		INHOF		HERNN 2600		JALIP 2.7 NM to RW01L		1100 2600 KEVIL △	
6000 ← 190° 2800 → 010°		010°		2600		1540		1.3 NM to RW01L	
GP 3.00° TCH 48		5.8 NM		3.3 NM		1.5 NM		1.3 NM	
CATEGORY	A	B	C	D					
LPV DA	845-¾				219 (300-¾)				
LNAV/ VNAV DA	1126-1⅜				500 (500-1⅜)				
LNAV MDA	1080-1	454 (500-1)			1080-1⅜		454 (500-1⅜)		
CIRCLING	1260-1 622 (700-1)	1280-1 642 (700-1)		1280-1¾ 642 (700-1¾)		1380-2½ 742 (800-2½)			



SC-1, 07 AUG 2025 to 04 SEP 2025

SC-1, 07 AUG 2025 to 04 SEP 2025