

WAAS CH 86627 W30A	APP CRS 302°	Rwy Idg 5500 TDZE 1145 Apt Elev 1145
--	------------------------	---

RNAV (GPS) RWY 30

OWATONNA DEGNER RGNL (OWA)

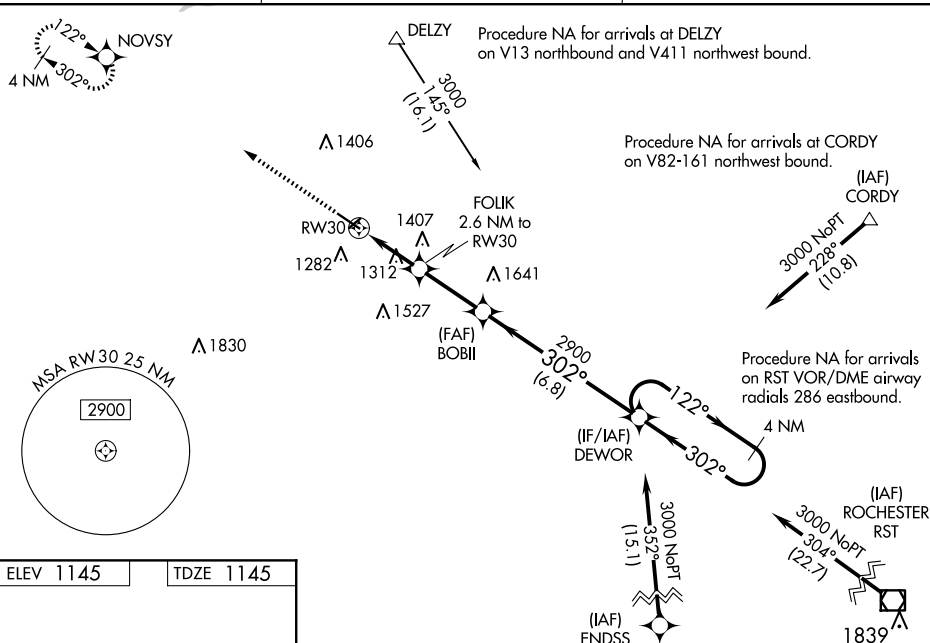
⚠ For uncompensated Baro-VNAV systems, LNAV/VNAV NA below -17°C (2°F) or above 54°C (130°F). DME/DME/RNP-0.3 NA. When local altimeter setting not received, use Fairbault altimeter setting and increase all DA 41 feet and all MDA 60 feet. Increase LNAV/VNAV all Cats visibility to 1½ mile, increase LNAV Cats C/D visibility to 1 mile, Cat C Circling visibility to 1¾ mile and Cat D visibility to 2½ mile. VDP and Baro-VNAV NA when using Fairbault altimeter setting. For inop MALS/R increase LNAV/VNAV all Cats visibility to 1½ miles. For inop MALS/R, when using Fairbault altimeter setting, increase LNAV/VNAV all Cats visibility to 1½ mile. LNAV Cats C/D visibility to 1¾ mile.

MALSR

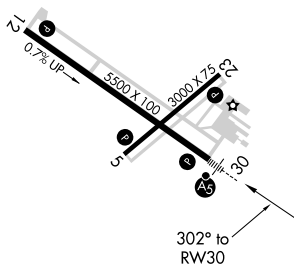


MISSED APPROACH.
Climb to 2800 direct
NOVSY and hold.

AWOS-3 128.325	ROCHESTER APP CON ★ 119.8 251.125	UNICOM 122.7(CTAF) 0
--------------------------	---	--------------------------------



ELEV 1145		TDZE 1145
-----------	--	-----------



MIRL Rwy 5-23 **L**
REIL Rwys 5, 12 and 23 **L**
HIRL Rwy 12-30 **L**

***LNAV only**

RW30 → FOLIK (2.6 NM to RW30) → BOBII (2900) → DEWOR

Holding Pattern: 122° → 3000 ← 302°

GP 3.00°
TCH 50

CATEGORY	A	B	C	D
LPV DA		1345-½	200 (200-½)	
LNAV/ VNAV		1567-1	422 (500-1)	
LNAV MDA	1580-½	435 (500-½)	1580-¾	435 (500-¾)
C CIRCLING	1640-1 495 (500-1)	1700-1 555 (600-1)	1720-1½ 575 (600-1½)	1880-2¼ 735 (800-2¼)