

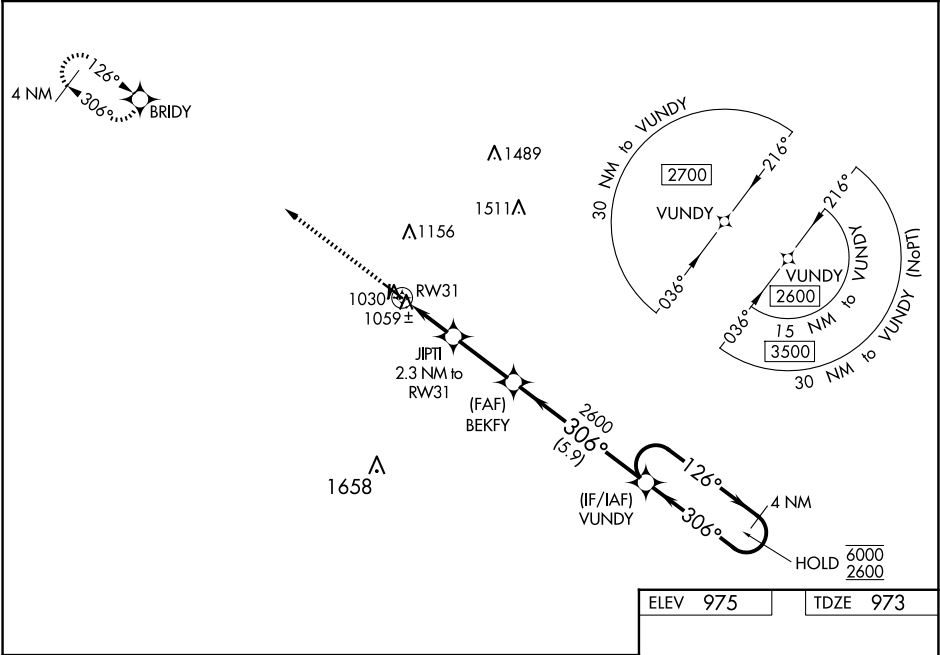
WAAS CH 48936 W31A	APP CRS 306°	Rwy Idg TDZE Apt Elev	5007 973 975
--	------------------------	-----------------------------	---

RNAV (GPS) RWY 31

MARSHALLTOWN MUNI (MIW)

RNP APCH.	<div><div>▼</div><div>▲</div><div>Baro-VNAV and VDP NA when using Grinnell altimeter setting. Rwy 31 Helicopter visibility reduction below ¾ SM NA. For uncompensated Baro-VNAV systems, LNAV/VNAV NA below -22°C or above 54°C. When local altimeter setting not received, use Grinnell altimeter setting and increase all DA 64 feet and all MDA 80 feet; increase LPV and LNAV/VNAV all Cats visibility ⅛ SM and LNAV Cats C/D and Circling Cat D visibility ¼ SM. Circling Rwy 18, 36 NA at night.</div></div>	MISSED APPROACH: Climb to 2700 direct BRIDY and hold.
-----------	--	--

ASOS 128.325	WATERLOO APP CON * 120.9	CLNC DEL 120.9	UNICOM 122.8 (CTAF) 0
------------------------	------------------------------------	--------------------------	--



2700

BRIDY

↑

✦

*LNAV only

*1 NM to RW31

RW31

1740*

JIPTI

2.3 NM to RW31

BEKFY

2600

VUNDY

4 NM Holding Pattern

1 NM

1.3 NM

2.7 NM

5.9 NM

306°

126°

306°

6000

2600

GP 3.00°

TCH 37

CATEGORY	A	B	C	D
LPV DA		1223-1	250 (300-1)	
LNAV/VNAV DA		1223-1	250 (300-1)	
LNAV MDA		1320-1	347 (400-1)	
CIRCLING	1400-1 425 (500-1)	1440-1 465 (500-1)	1460-1½ 485 (500-1½)	1840-2¾ 865 (900-2¾)

