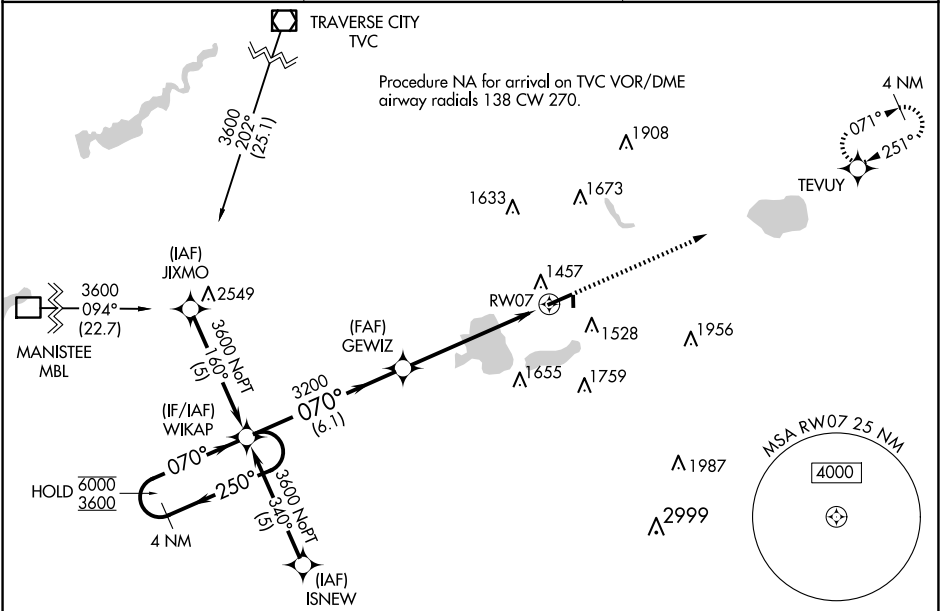


WAAS CH 86413 W07A	APP CRS 070°	Rwy Ldg TDZE 1307 Apt Elev 1307
--	------------------------	---

RNAV (GPS) RWY 7
WEXFORD COUNTY (CAD)

RNP APCH - GPS.	MALSF	MISSED APPROACH: Climb to 3000 direct TEVUY and hold.
▼ Inop table does not apply to LPV all Cats and LNAV Cats A and B. For uncompensated Baro-VNAV systems, LNAV/VNAV NA below -24°C or above 54°C. Circling NA to Rwys 18 and 36. Rwy 7 helicopter visibility reduction below ¾ SM NA. For inop ALS, increase LNAV/VNAV visibility all Cats to 1½ SM.		

AWOS-3P 128.325	MINNEAPOLIS CENTER 132.9 338.3	UNICOM 122.8 (CTAF) 0
---------------------------	--	---------------------------------



4 NM Holding Pattern		VGSi and RNAV glidepath not coincident (VGSi Angle 3.00/TCH 41).		ELEV 1307	TDZE 1307
GP 3.05° TCH 45		WIKAP		TEVUY	
6000 ← 250°		GEWIZ		1353	
3600 → 070°		3200		5001 X 100	
		1.4 NM to RWY 07		1986 X 150	
		RWY 07		070°	
		6.1 NM			
		4.4 NM			
		1.4 NM			
CATEGORY	A	B	C	D	
LPV DA		1557-¾	250 (300-¾)		
LNAV/VNAV DA		1761-1	454 (500-1)		
LNAV MDA	1780-¾	473 (500-¾)	1780-1½	473 (500-1½)	
CIRCLING	1820-1 513 (600-1)	1840-1 533 (600-1)	1860-1½ 553 (600-1½)	2060-2½ 753 (800-2½)	
					HIRL Rwy 7-25 0 REIL Rwys 7 and 25 0

EC-1, 07 AUG 2025 to 04 SEP 2025

EC-1, 07 AUG 2025 to 04 SEP 2025