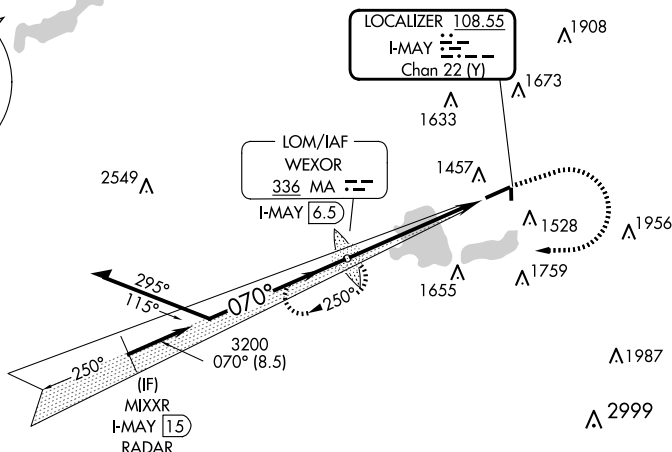






25163

ILS or LOC RWY 7

MISSED APPROACH: Climb to 2400 then climbing right turn to 3200 direct WEXOR LOM/I-MAY 6.5 DME and hold.

UNICOM
122.8 (CTAF) 

2400	3200	MA
		

nd ILS glidepath not coincident
(VGS1 Angle 3.00/TCH 41)

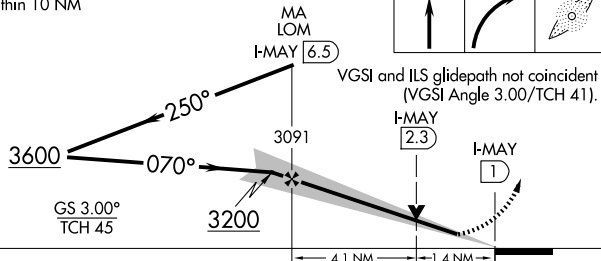


Diagram illustrating the HIRL Rwy 7-25 and REIL Rwy 7 and 25. The diagram shows a runway layout with a 070° heading. The runway is labeled '5001 X 100'. The HIRL Rwy 7-25 is shown with a length of 1986 X 150. The REIL Rwy 7 and 25 is shown with a length of 32 X 6. The diagram also includes a star symbol and the number 1353.

WEXFORD COUNTY (CAD)
ILS or LOC RWY 7

Amdt 1A 12JUN25