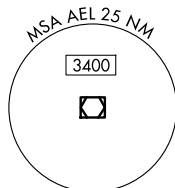
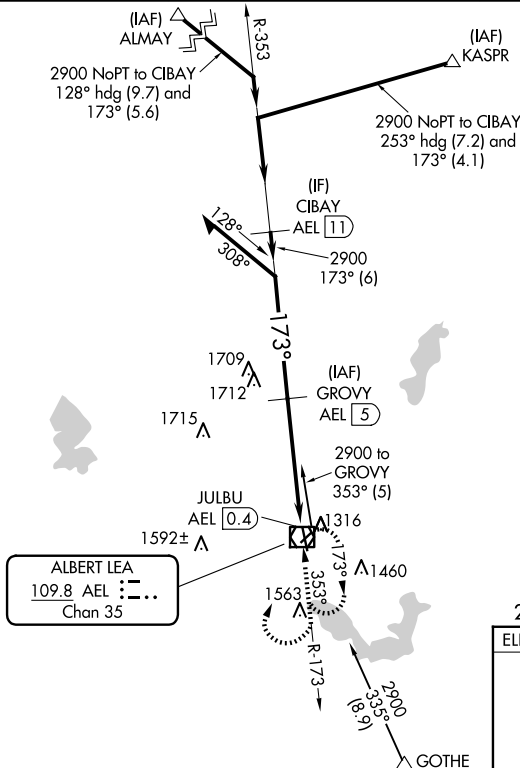


VOR RWY 17
ALBERT LEA MUNI (AEL)

MISSED APPROACH: Climb to 2500 then climbing right turn to 2900 direct AEL VOR/DME and hold.

UNICOM
123.0 (CTAF) **L**

Remain within 10 NM

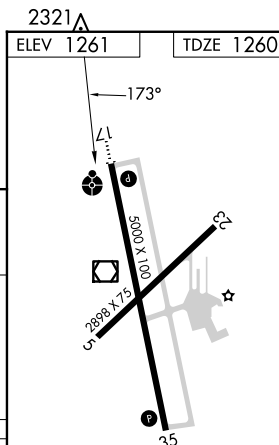
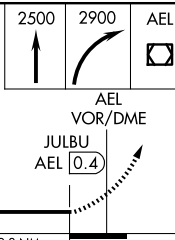
353°

2900

173°

2900

3.2 TC



MIRL Rwy 17-35 **L**
REIL Rwy 17 and 35 **L**