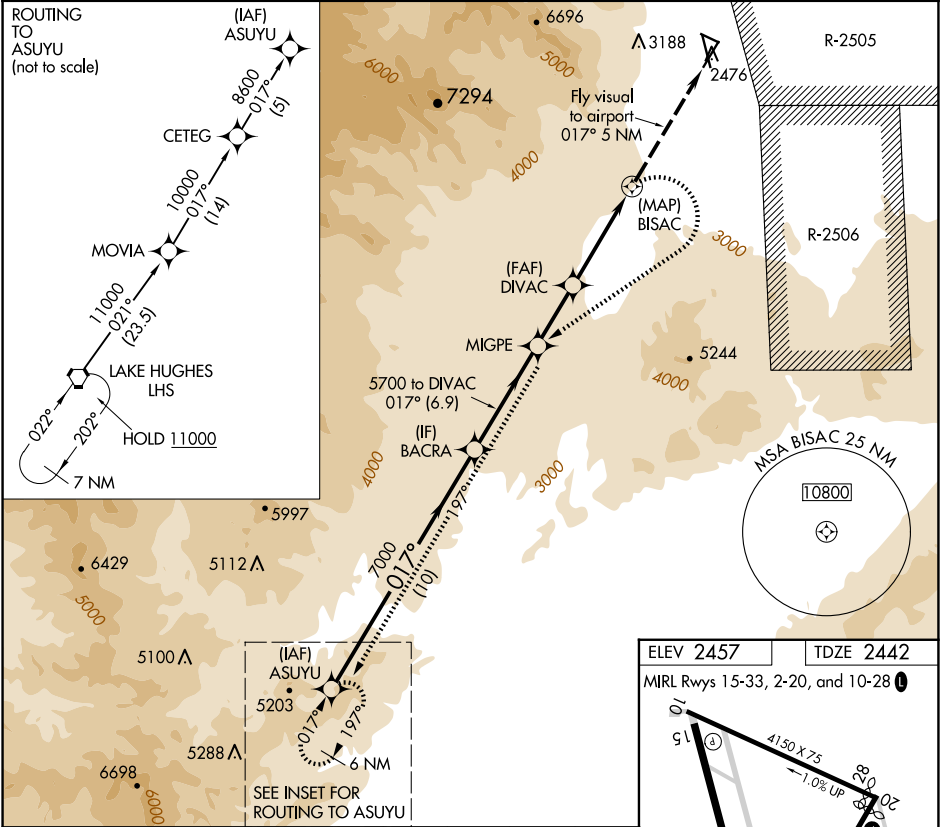


APP CRS 017°	Rwy Idg 6275
	TDZE 2442
	Apt Elev 2457

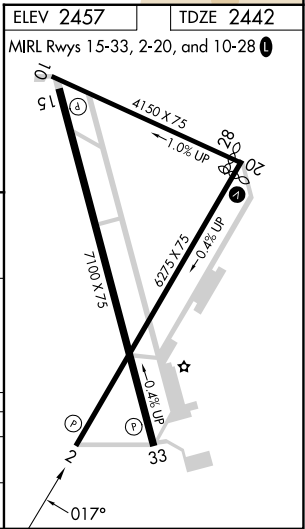
RNAV (GPS) RWY 2
INYOKERN (IYK)

RNP APCH.	MISSED APPROACH: (Do not exceed 165K until SW bound) Climbing right turn to 8600 direct MIGPE then left turn on track 197° to ASUYU and hold.
NA	Circling Rwy 10, 33 NA at night. Circling NA east of Rwy 15-33. Circling NA at night west of Rwy 2 and 15. Except for operators with approved weather reporting service, use Mojave altimeter setting, if not available, procedure NA.

MHV AWOS-3 132.225	JOSHUA APP CON 133.65 348.7	AUNICOM 122.8 (CTAF) 0
------------------------------	---------------------------------------	----------------------------------



ASUYU	BACRA	DIVAC	BISAC	ASUYU
8600		7000	5700	
017°		197° tr		
10 NM	6.9 NM	4.1 NM	5 NM	
3.32°		TCH 40		Fly visual to airport 017° 5 NM
CATEGORY	A	B	C	D
LNAV MDA	4200-3	1758 (1800-3)		
CIRCLING	4200-3	1743 (1800-3)	4780-3 2323 (2400-3)	5640-3 3183 (3200-3)



SW-3, 07 AUG 2025 to 04 SEP 2025

SW-3, 07 AUG 2025 to 04 SEP 2025